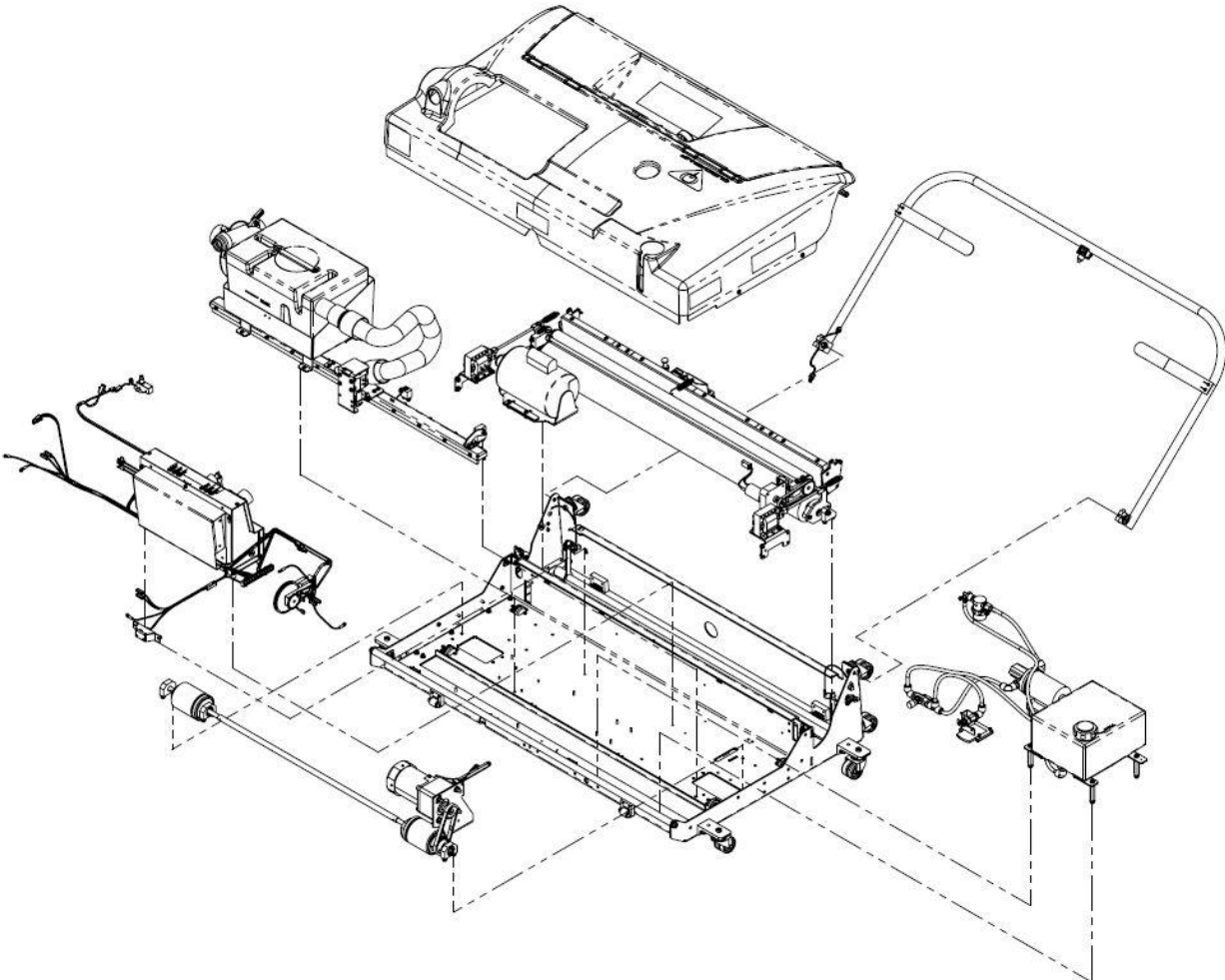


Section 7
PARTS



This section contains parts drawings as well as wiring diagrams for the EZ Touch Lane Machine. The drawings are shown within functional groupings, as listed on the next page.

Use the drawings in the section for reference when repairing or replacing parts on the machine. Order any replacement parts using the part numbers listed in the adjacent tables. Assemblies listed in **bold** type in the parts lists have exploded view drawings on the pages that follow. The Parts Index, located in the back of this manual, is useful for determining the page number(s) a particular part number is used on.

In order to keep the part descriptions as simple as possible, several abbreviations have been used. These abbreviations include:

- ASM - Assembly
- INC. - Includes
- VAC - Vacuum
- LG - Long

Repairing, replacing, and adjusting machine components should only be done by experienced operators. If a drawing is not clear or does not contain information on a part that needs to be replaced, contact QubicaAMF Technical Support at 1-866-460-7263 between the hours of 8:00 a.m. and 5:00 p.m. Eastern Time. After 5:00 p.m., a message can be left on the voice mail system. The 24-hour fax line is 1-804-730-4390. Address all faxes to: QubicaAMF Products Technical Support.

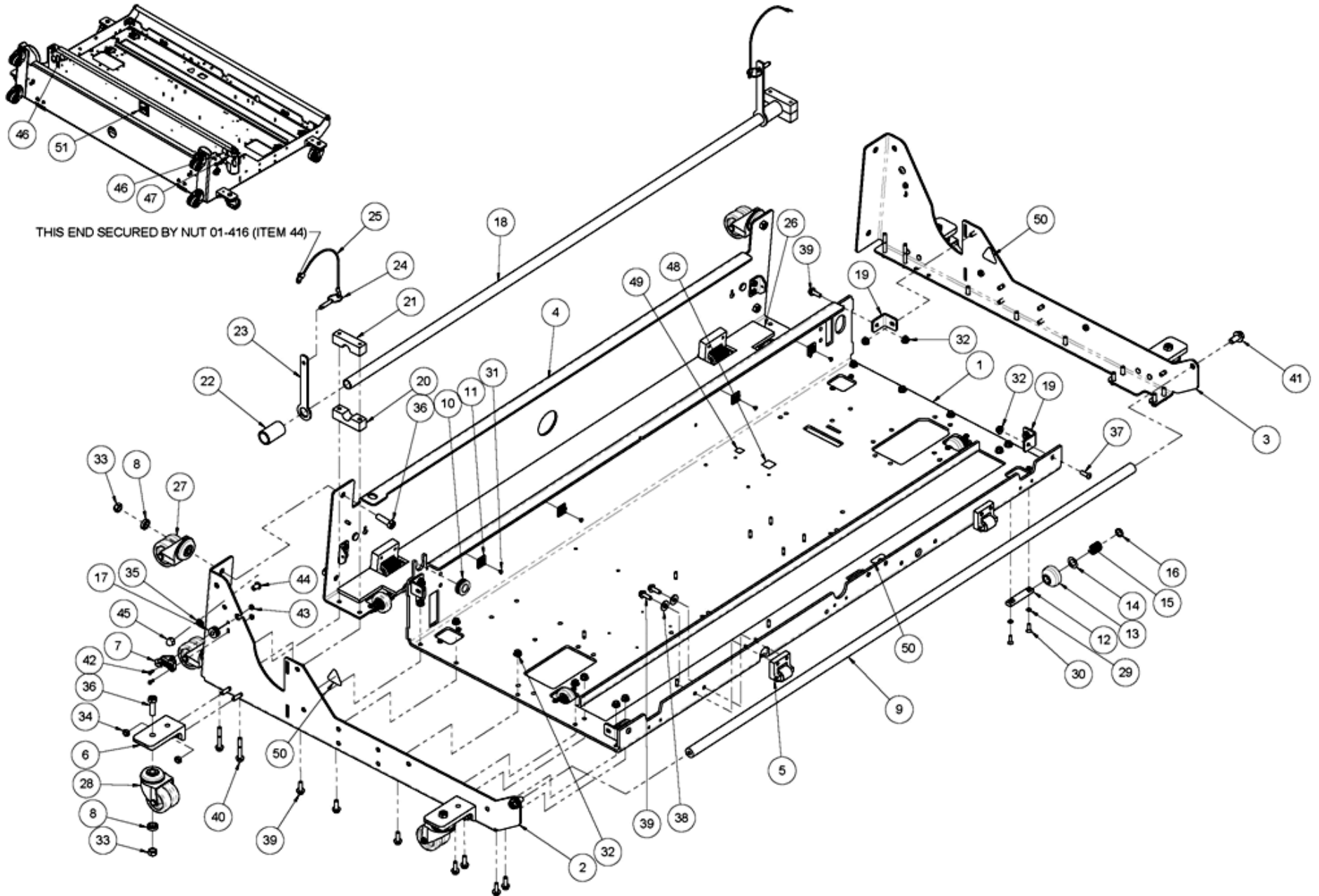
FRAME and BODY
7-6 Base Plate and Side Plates
7-8 Hood Assembly
VACUUM and CLEANER SYSTEMS
7-10 Vacuum System
7-12 Vacuum Head Assembly
7-13 Vacuum Head Solenoid & Bracket Assembly
7-13 Vacuum Head Tensioner Assembly
7-14 Vacuum Hose Assembly
7-14 Vacuum Motor & Bracket Assembly
7-15 Waste Tank & Bracket Assembly
7-16 Cleaner System
7-17 Cleaner Pump Assembly
7-18 Cleaner Filter Assembly
7-18 Flow Control Valve Assembly
7-19 Cleaner Tank & Bracket Assembly
DRIVE SYSTEM
7-22 Drive Assembly
7-23 Drive Shaft Assembly
7-23 Left Hand Drive Shaft End Assembly
7-23 Right Hand Drive Shaft End Assembly
7-24 Drive Shaft Bearing Block Assembly
7-24 Drive Motor Assembly

OILING and BUFFING
7-26 Oiling and Buffing System
7-28 Transfer Roller Assembly
7-29 Transfer Roller Support Assembly
7-29 Roller Shaft Support Assembly
7-30 Left Hand Buffer Solenoid Assembly
7-30 Right Hand Buffer Solenoid Assembly
7-31 Left Hand Buffer Mounting Assembly
7-31 Right Hand Buffer Mounting Assembly
7-32 Oil Tank Assembly
7-34 Buffer Motor Assembly
7-34 Transfer Motor Assembly
CONTROL SYSTEM
7-36 Control System Components
7-37 Control Box Assembly
7-37 Optical Sensor Assembly
7-38 Counter Wheel Assembly
7-40 Handle Assembly
MISCELLANEOUS
7-42 Power Cord Assemblies, 110V & 220V
7-43 Buffer Brush Adjusting Tool
7-44 Wiring Diagram, 110V Machine
7-45 Wiring Diagram, 240V Machine

This Page Intentionally Left Blank.

FRAME and BODY

Frame Assembly – Base Plate and Side Plates



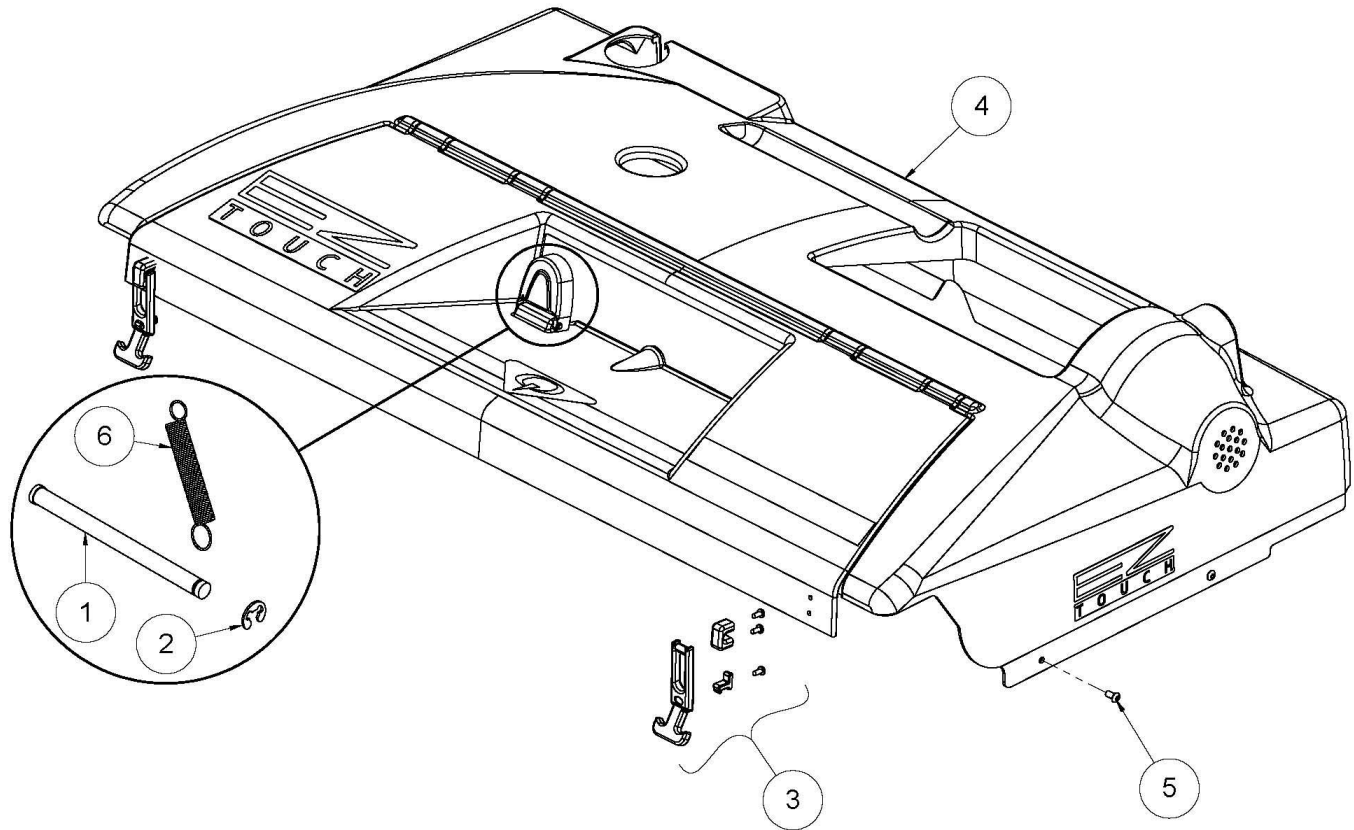
Frame Assembly – Base Plate and Side Plates

	NUMBER	DESCRIPTION
1	294-116-001	BASE PLATE ASSEMBLY
2	294-116-003	SIDE PLATE ASSEMBLY, RIGHT HAND
3	294-116-005	SIDE PLATE ASSEMBLY, LEFT HAND
4	294-116-008	REAR PLATE ASSEMBLY
5	SA-3012	DUSTER END PLATE ROLLER
6	294-115-613	CASTER BRACKET, 2-INCH
7	A-2037	POWER CABLE HOOK
8	A-0794	CASTER SPACER
9	294-116-013	LIFT HANDLE
10	711-520-017	GROMMET, 5/8 ID X 7/8OD X 3/16 PANEL
11	02-539	CABLE MOUNTING BLOCK, 3/4 X 3/4
12	294-116-019	GUIDE ROLLER AXLE
13	SA-0244	GUIDE WHEEL ASSEMBLY
14	01-161	PHENOLIC WASHER
15	A-0024	GUIDE ROLLER SPRING
16	A-0025	GUIDE ROLLER WASHER
17	04-078	GROMMET, 5/16 X 3/4 X 1/8, RUBBER
18	294-116-014	OIL TANK SUPPORT TUBE
19	294-116-015	FRAME BRACKET
20	294-116-016	OIL TANK TUBE BLOCK, BOTTOM
21	294-116-017	OIL TANK TUBE BLOCK, TOP
22	294-116-098	OIL TANK SPACER
23	294-115-706	OIL TANK RETAINING BRACKET
24	04-118	PIN QR 0.25 X 0.80 NS
25	04-335	CABLE ASSEMBLY, 8"
26	294-116-018	FOAM OIL TANK DRIP PAD

	NUMBER	DESCRIPTION
27	294-116-011	STORAGE CASTER, 2-INCH
28	294-115-614	OPERATING CASTER, 2-INCH
29	951-638-068	WASHER, EXT. TOOTH COUNTERSUNK, #10
30	01-123	SCREW, PHILLIPS FLAT HEAD, 10-32 X 5/8
31	01-355	SCREW, FLAT HEAD, #6 X 1/4
32	856-149-001	NUT, HEX FLANGE STOVER LOCK, 1/4-20
33	844-065-002	NUT, STOVER LOCK, 3/8-16
34	844-049-002	NUT, STOVER LOCK, 1/4-20
35	951-156-002	WASHER, SPLIT LOCK, 5/16
36	809-865-205	SCREW, HEX 3/8-16 X 1-1/4
37	808-549-120	SCREW, BUTTON HEAD, 1/4-20 X 3/4
38	01-056	WASHER, FLAT, 1/4
39	801-749-121	SCREW, FLANGE HEAD FLEX 1/4-20 X 3/4
40	801-749-281	SCREW, FLANGE HEAD FLEX 1/4-20 X 1-3/4
41	801-765-121	SCREW, FLANGE HEAD FLEX 3/8-16 X 3/4
42	01-001	SCREW, PAN-HEAD PHILLIPS 6-32 X 0.38, ZINC
43	01-416	NUT, 6-32X NYLON LOCKING
44	808-557-082	SCREW, BUTTON HEAD, 5/16-18 X 1/2
45	830-057-002	NUT, ACORN, 5/16-18
46	294-115-245	HAND ENTANGLEMENT-CHAIN DECAL
47	294-115-246	HAND ENTANGLEMENT DECAL
48	294-115-256	GND STICKER IEC 60417-1-5017
49	A-1058	PE GROUND DECAL
50	294-115-237	HAND CRUSH DECAL
51	294-115-723	KEEP LEVEL STICKER

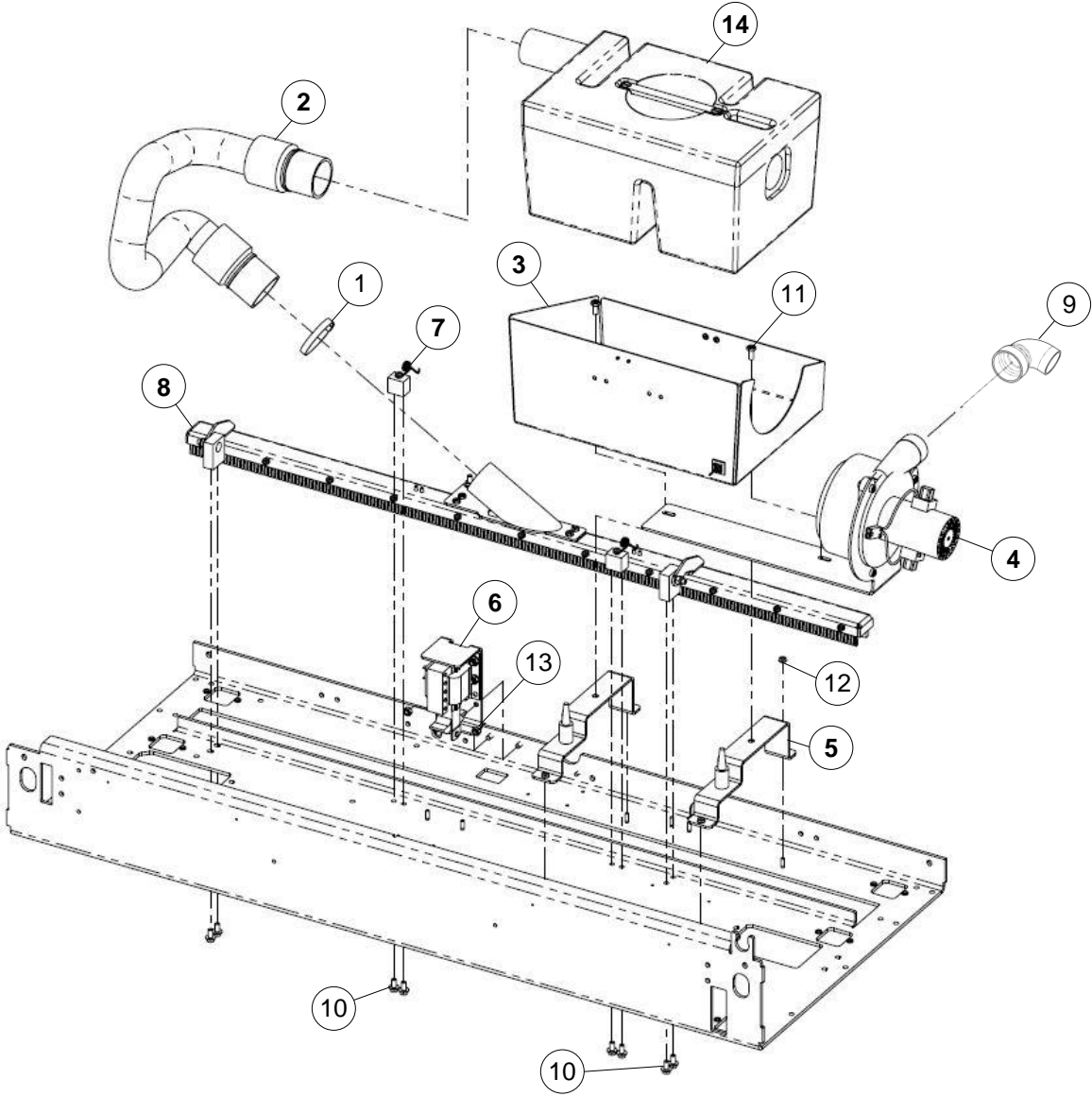
Hood Assembly – 294-116-210

	NUMBER	DESCRIPTION
1	294-115-560	CLEVIS PIN
2	294-115-561	E-CLIP
3	294-115-566	DRAW LATCH ASM
4	294-116-209	HOOD ASM (INCLUDES 1, 2 & 4)
5	808-549-080	SCREW, BUTTON HEAD, 1/4-20 X 1/2
6	A-0113	EXTENSION SPRING



VACUUM and CLEANER SYSTEMS

Vacuum System



Vacuum System

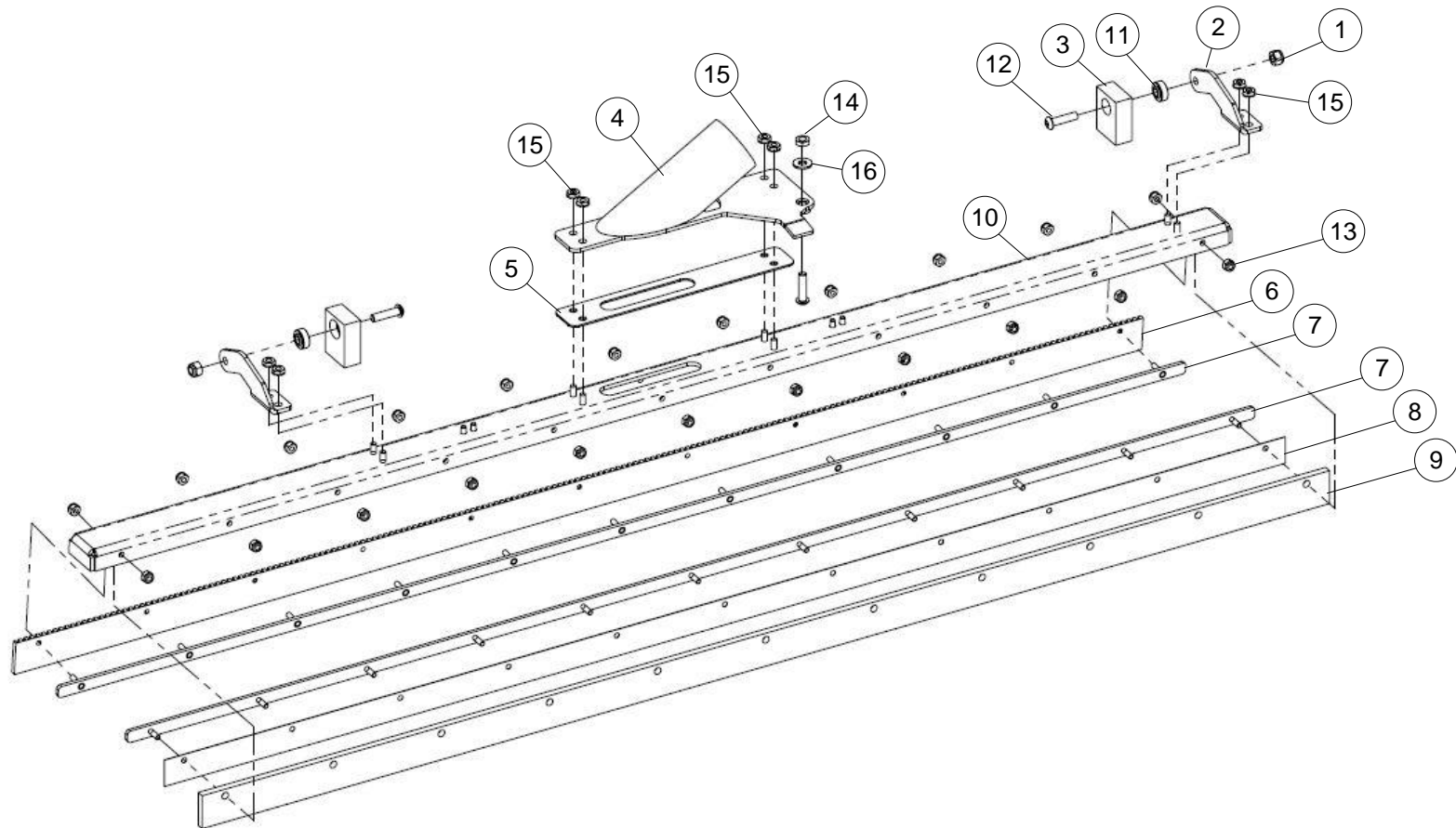
	NUMBER	DESCRIPTION
1	04-120	HOSE CLAMP
2	294-115-113	VAC HOSE ASM
3	294-115-233	WASTE TANK GUARD ASM
4	294-116-031 294-116-032	VAC MOTOR & BRACKET ASM, 110V VAC MOTOR & BRACKET ASM, 220V
5	294-116-043	TANK SUPPORT ASM
6	294-116-125 294-116-124	VAC SOLENOID ASM, 110V VAC SOLENOID ASM, 220V
7	294-116-128	VAC HEAD TENSIONER ASM

	NUMBER	DESCRIPTION
8	294-116-147	VAC HEAD ASM
9	294-116-148	EXHAUST DIVERTER
10	801-749-081	SCREW, FLANGE HEAD HEX, 1/4-20 X 1/2
11	809-849-100	SCREW, HEX, 1/4-20 X 5/8
12	843-140-002	NUT, KEPS, 10-32
13	844-049-002	NUT, STOVER LOCK, 1/4-20
14	SA-1129	WASTE TANK ASM

Vacuum Head Assembly - 294-116-147

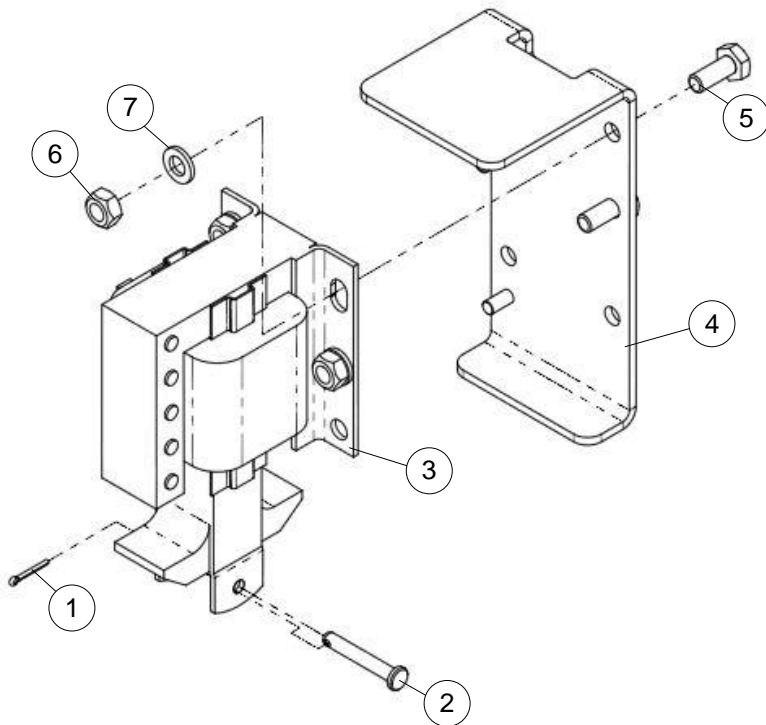
	NUMBER	DESCRIPTION
1	01-051	NUT, NYLON LOCK, 1/4-20
2	294-116-129	ARM, VAC HEAD
3	294-116-132	PIVOT BLOCK, VAC HEAD
4	294-116-135	HORN WELDMENT, VAC HEAD
5	294-116-136	GASKET, VAC HEAD
6	294-116-137	SQUEEGEE
7	294-116-139	STUD BAR, VAC HEAD
8	294-116-141	AGITATOR FOAM SHIM

	NUMBER	DESCRIPTION
9	294-116-142	AGITATOR FOAM
10	294-116-146	VAC HEAD BAR
11	702-108-000	BEARING, SPHERICAL, 1/4 X 21/32 X 1/4
12	808-549-160	SCREW, BUTTON HEAD, 1/4-20 X 1
13	832-133-008	NUT, NYLON LOCK, 8-32
14	835-549-002	NUT, HEX JAM, 1/4-20
15	843-140-002	NUT, KEPS, 10-32
16	948-753-101	WASHER, FLAT, 1/4



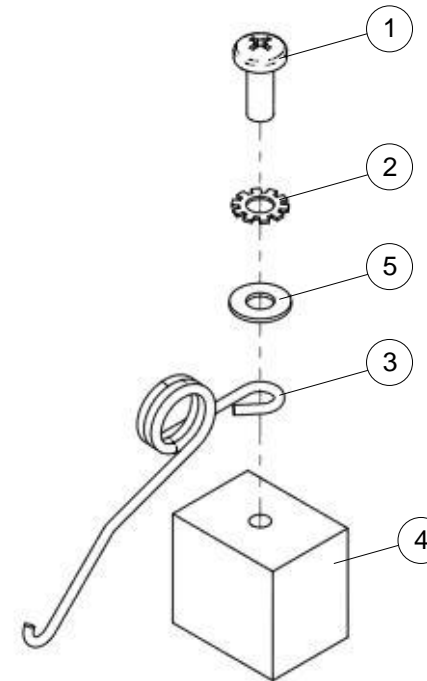
Vacuum Head Solenoid & Bracket Assembly

	NUMBER	DESCRIPTION
1	01-080	PIN, COTTER, 1/16 X 1/2 LG
2	01-495	PIN, CLEVIS, 3/16 X 1-1/4 LG
3	294-002-033 294-002-274	SOLENOID, 110V, 60 HZ, LEFT HAND SOLENOID, 220V, 50HZ, LEFT HAND
4	294-116-123	VAC SOLENOID BRACKET ASM
5	809-849-100	SCREW, HEX, 1/4-20 X 5/8
6	844-049-002	NUT, STOVER LOCK, 1/4-20
7	945-548-000	WASHER, FLAT, 1/4



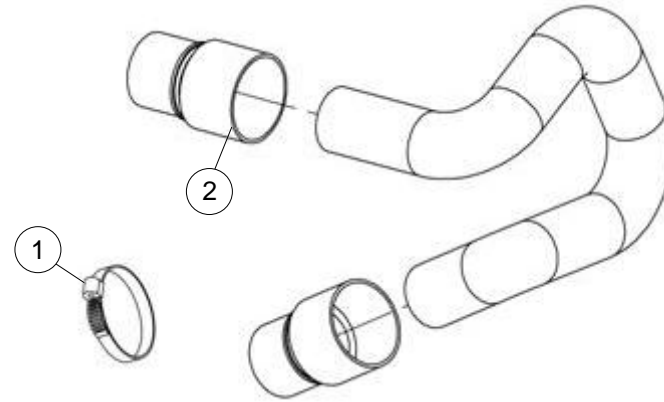
Vacuum Head Tensioner Assembly – 294-116-128

	NUMBER	DESCRIPTION
1	01-021	SCREW, PAN HEAD, 10-32 X 1/2
2	01-033	WASHER, EXT TOOTH LOCK, #10
3	294-116-126	SPRING
4	294-116-127	VAC HEAD SPRING BLOCK
5	948-545-072	WASHER, MACHINE, #10



Vacuum Hose Assembly & Clamp

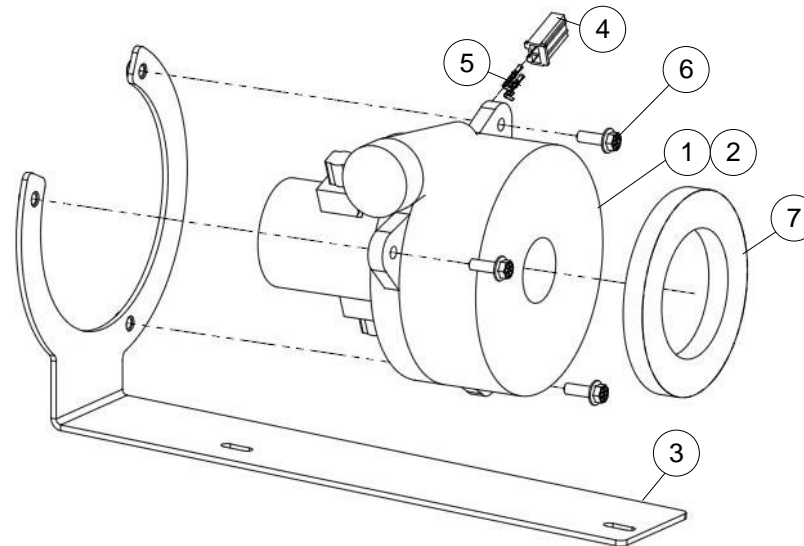
	NUMBER	DESCRIPTION
1	04-120	HOSE CLAMP
2	04-150	SLIP ADAPATER



Vacuum Motor & Bracket Assembly

	NUMBER	DESCRIPTION
1a	02-214	VAC MOTOR, 110V
1b	02-255	VAC MOTOR, 220V
2a	294-116-047	VAC MOTOR ASM, 110V (INC. 1a,4,5 & 6)
2b	294-116-046	VAC MOTOR ASM, 220V (INC. 1b,4,5 & 6)
3	294-116-117	VAC MOTOR BRACKET ASM
4	746-013-498	CONNECTOR, 2 POSITION

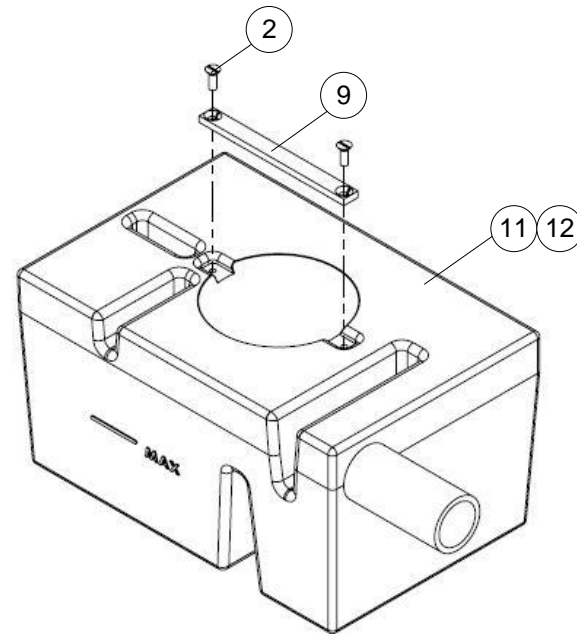
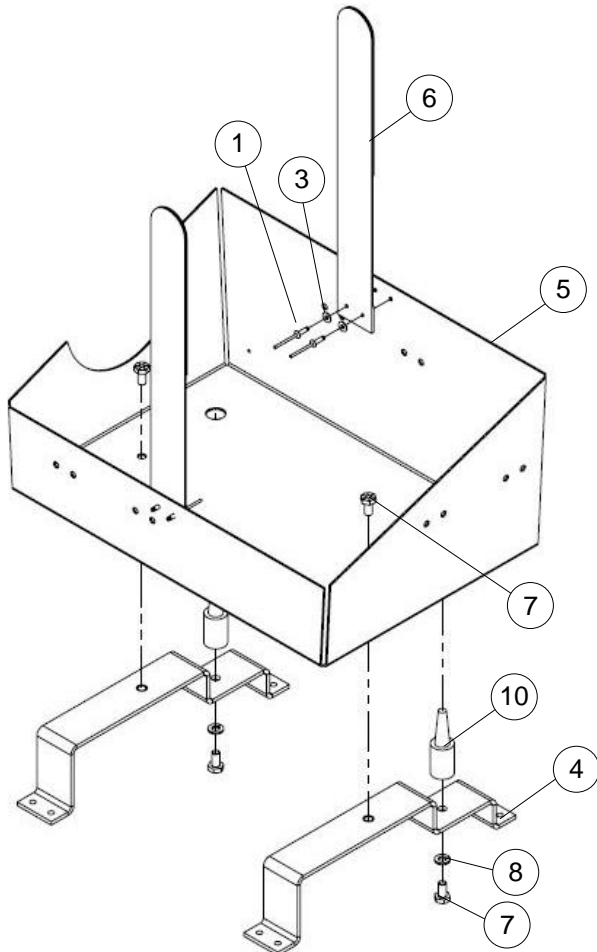
	NUMBER	DESCRIPTION
5	760-019-223	CRIMP TERMINAL, FEMALE, 14-20 AWG
6	801-749-121	SCREW, FLANGE HEAD HEX, 1/4-20 X 3/4
7	A-8307	WASTE TANK SEAL, 1/2 THICK



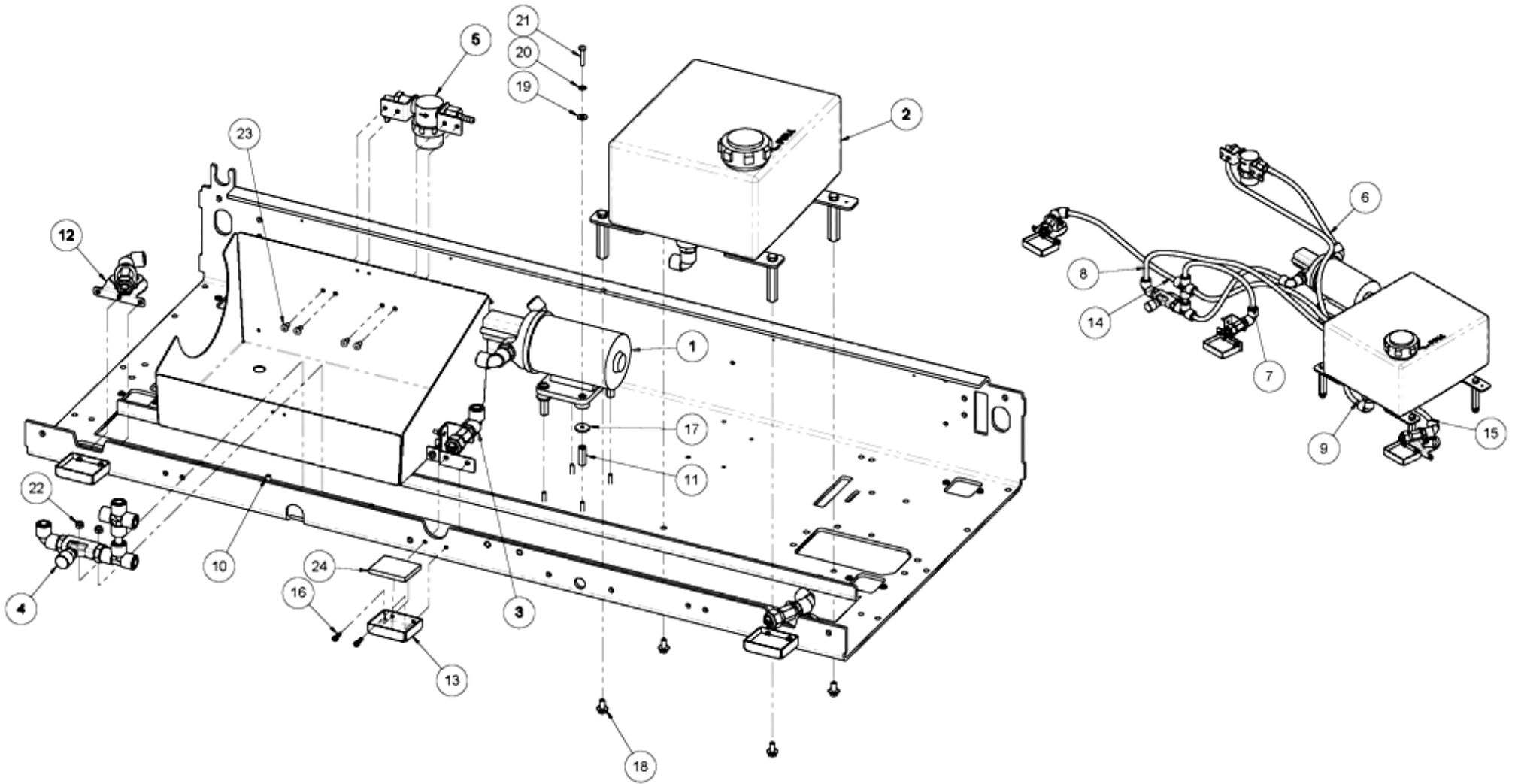
Waste Tank & Bracket Assembly

	NUMBER	DESCRIPTION
1	01-089	RIVET, 1/8 DIA X 3/8 LG, ALUMINUM
2	01-148	SCREW, FLAT HEAD MACHINE, 1/4-20 X 3/4
3	01-303	WASHER, FLAT, 1/8 X 11/32 X 1/32
4	294-115-040	WASTE TANK SUPPORT BRACKET
5	294-115-227	WASTE TANK GUARD
6	294-115-247	STRAP, EXPRESS WASTE TANK

	NUMBER	DESCRIPTION
7	809-849-085	SCREW, HEX, 1/4-20 X 1/2
8	951-148-008	WASHER, SPLIT LOCK, 1/4
9	A-8308	WASTE TANK HANDLE
10	A-8331	WASTE TANK LOCATING PIN
11	C-8341	POLYETHYLENE TANK
12	SA-1129	WASTE TANK ASM (INCLUDES 2,9, & 11)



Cleaner System



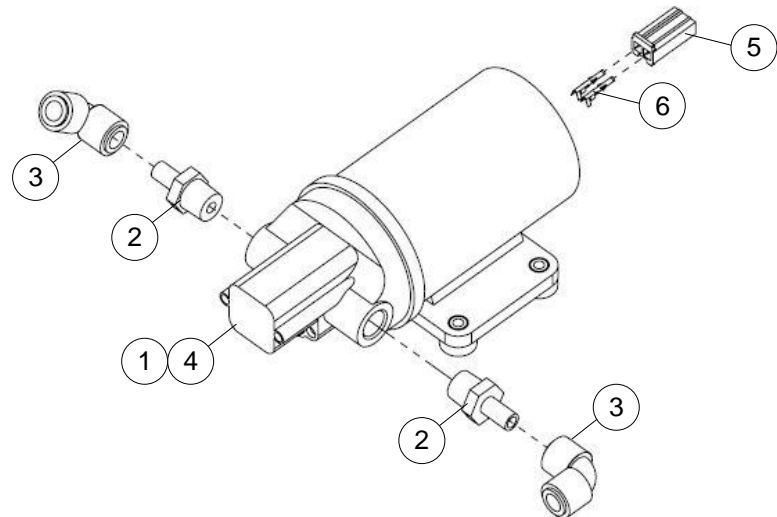
Cleaner System

	NUMBER	DESCRIPTION
1	294-116-049 294-116-048	CLEANER PUMP & FITTINGS, 110V CLEANER PUMP & FITTINGS, 220V
2	294-116-105	CLEANER TANK & BRACKET ASM
3	294-116-113	SWIVEL NOZZLE ASM
4	294-116-151	FLOW CONTROL NOZZLE ASM
5	294-115-673	FILTER ASM
6	294-116-152	TYGOTHANE TUBE, 9 IN
7	294-116-153	TYGOTHANE TUBE, 12 IN
8	294-116-154	TYGOTHANE TUBE, 35 IN
9	294-116-155	TYGOTHANE TUBE, 37 IN
10	294-115-733	TUBE SUPPORT
11	722-502-091	SPACER, FEMALE HEX, 10-32 X 3/8 X 1
12	294-116-234	SIDE NOZZLE ASM

	NUMBER	DESCRIPTION
13	294-115-650	DRIP TRAY
14	294-116-238	TYGOTHANE TUBE, 16 IN
15	294-116-239	TYGOTHANE TUBE, 31 IN
16	810-240-088	SCREW, SOCKET-HEAD CAP 10-32 X 0.50, STAINLESS STEEL
17	7150-019075-009	WASHER, FLAT, 3/16 X 3/4 X 3/32, ALUMINUM
18	801-749-081	SCREW, FLANGE HEAD HEX, 1/4-20 X 1/2
19	01-030	WASHER, FLAT, #10 SAE, ZINC
20	01-033	WASHER, EXTERNAL TOOTH LOCK, #10 ANSI, ZINC
21	01-024	SCREW, PAN-HEAD PHILLIPS MACHINE 10-32 X 1.00, ZINC
22	832-040-008	NUT, NYLON LOCK, 10-32
23	01-019	SCREW, PAN-HEAD PHILLIPS MACHINE 10-32 X 0.38 ZINC
24	294-115-554	DRIP TRAY FOAM

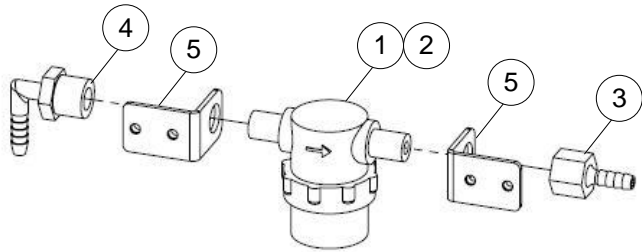
Cleaner Pump Assembly

	NUMBER	DESCRIPTION
1a	02-206	CLEANER PUMP, 110V
1b	294-115-287	CLEANER PUMP, 220V
2	294-115-072	STEM ADAPTER, 3/8 MPT X 3/8
3	294-115-073	UNION ELBOW, 3/8 X 3/8
4	294-115-729 294-115-730	CLEANER PUMP ASM, 110V (INC. 1a, 5, & 6) CLEANER PUMP ASM, 220V (INC. 1b, 5, & 6)
5	746-013-498	CONNECTOR, 2 POSITION
6	760-019-223	CRIMP TERMINAL, FEMALE, 14-20 AWG



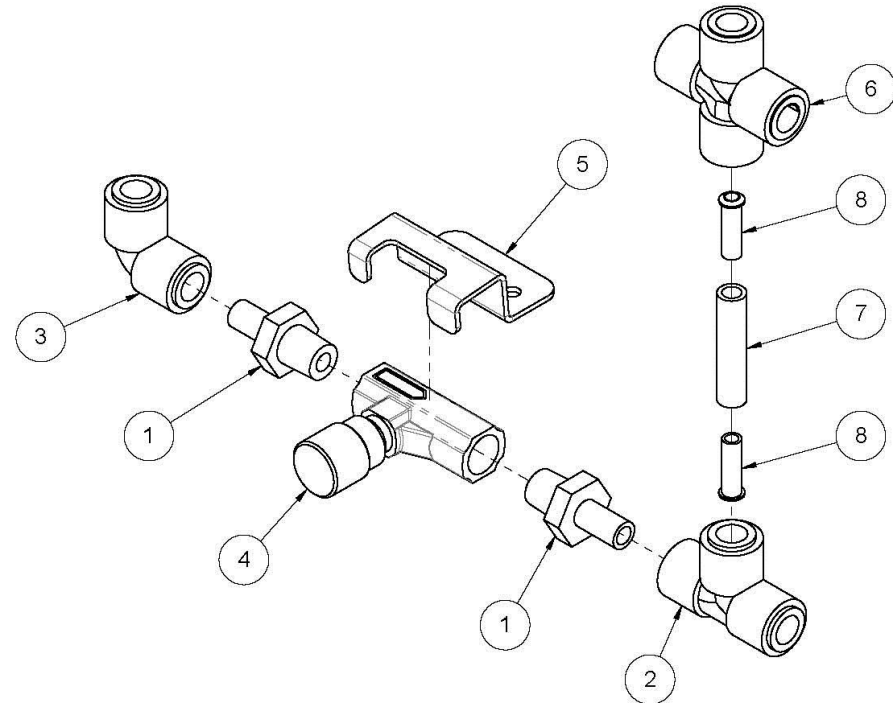
Cleaner Filter Assembly- 294-115-673

	NUMBER	DESCRIPTION
1	04-322	FILTER BOWL
2	04-322-1	MESH SCREEN FILTER (NOT SHOWN)
3	04-398	BAREB FITTING, 1/4 NPT X 1/4
4	294-115-455	BARED FITTING, 90°, 1/4 FEMALE X 1/4
5	294-115-675	FILTER MOUNTING BRACKET ASM



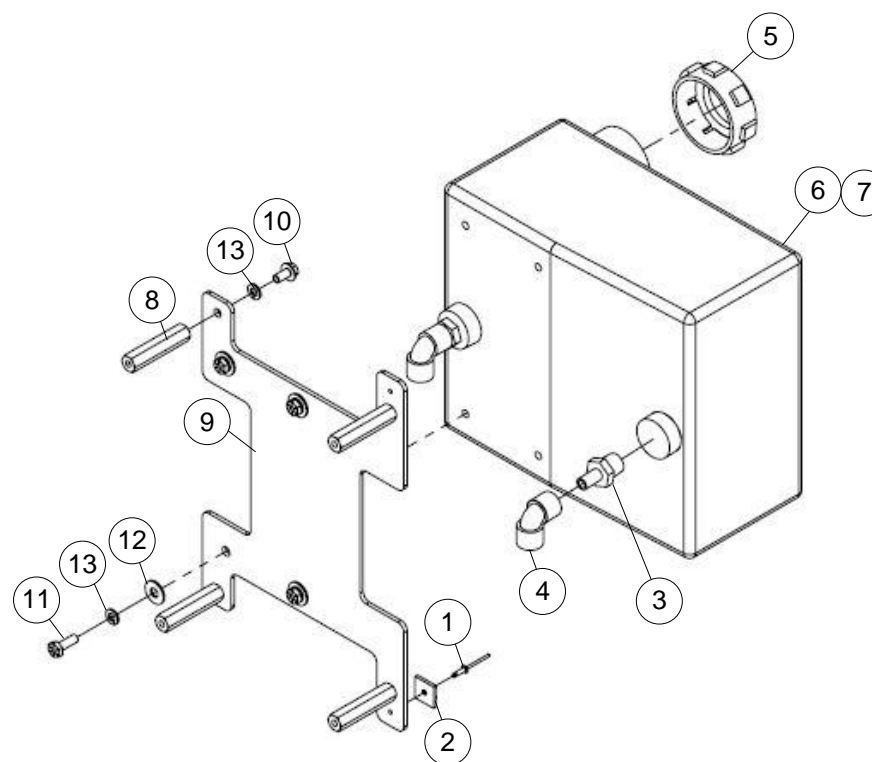
Flow Control Valve Assembly - 294-116-151

	NUMBER	DESCRIPTION
1	294-115-071	STEM ADAPTER, 1/4 MPT X 3/8
2	294-115-074	UNION TEE, 3/8 X 3/8
3	294-115-073	UNION ELBOW, 3/8 X 3/8
4	294-115-636	FLOW CONTROL VALVE
5	294-116-149	FLOW CONTROL VALE BRACKET
6	294-115-076	UNION CROSS (4X) 3/8
7	294-116-237	TYGOTHANE TUBE, 1.75 IN
8	294-115-733	TUBE SUPPORT



294-116-105 - Cleaner Tank & Bracket Assembly

	NUMBER	DESCRIPTION
1	01-089	RIVET, 1/8 DIA X 3/8 LG, ALUMINUM
2	02-539	CABLE MOUNTING BLOCK, 3/4 X 3/4
3	294-115-072	STEM ADAPTER, 3/8 MPT X 3/8
4	294-115-073	UNION ELBOW, 3/8 X 3/8
5	294-115-092	CLEANER TANK CAP
6	294-115-525	CLEANER SUPPLY TANK
7	294-115-638	CLEANER TANK ASM (INCLUDES 2,3,4 & 5)
8	294-116-106	STANDOFF, CLEANER TANK
9	294-116-112	CLEANER TANK SUPPORT BRACKET
10	801-749-081	SCREW, FLANGE HEAD HEX, 1/4-20 X 1/2
11	809-849-125	SCREW, HEX, 1/4-20 X 3/4
12	945-056-122	WASHER, FLAT, 1/4
13	951-148-008	WASHER, SPLIT LOCK, 1/4



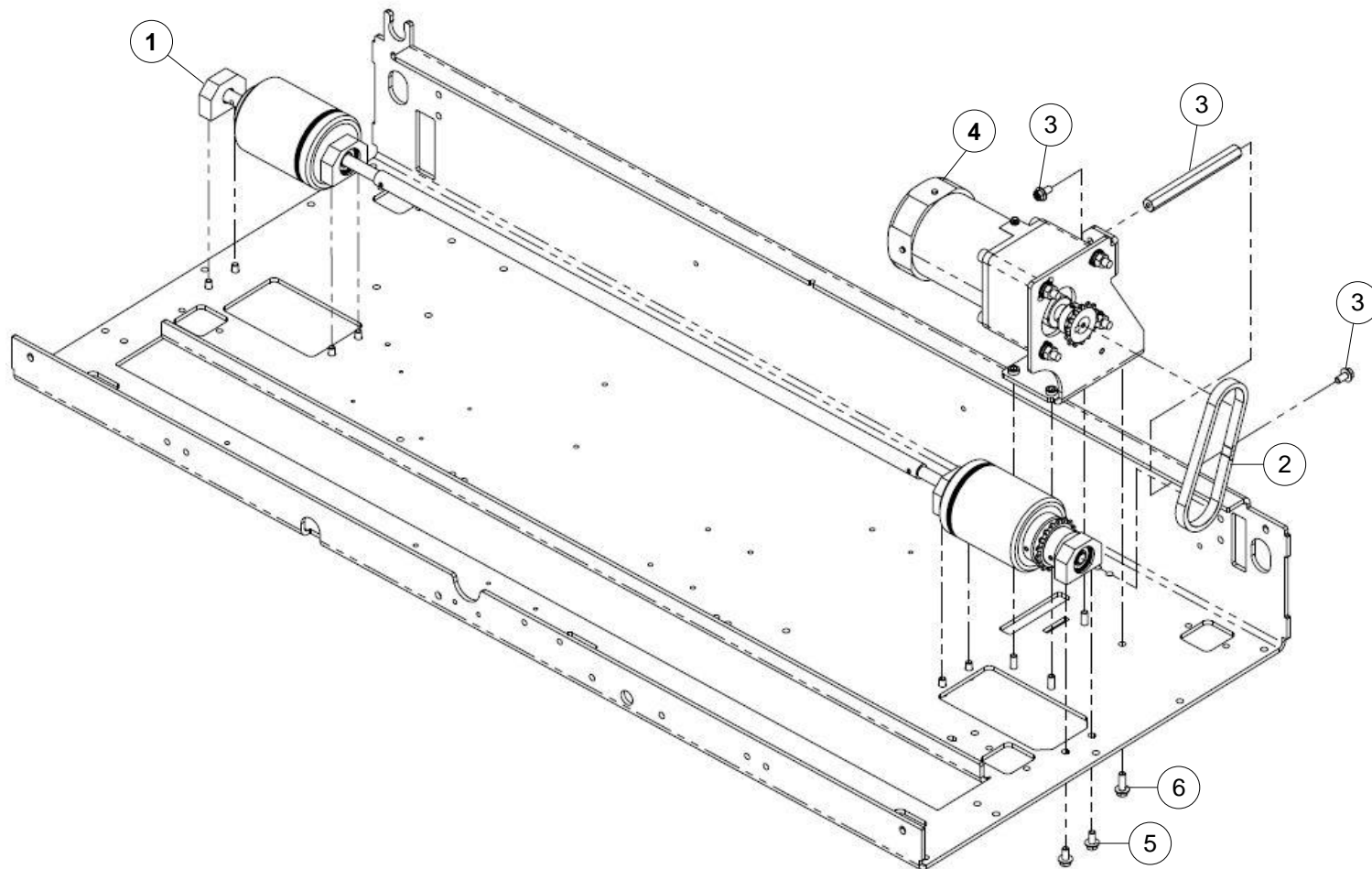
This Page Intentionally Left Blank.

DRIVE SYSTEM

Drive Assembly

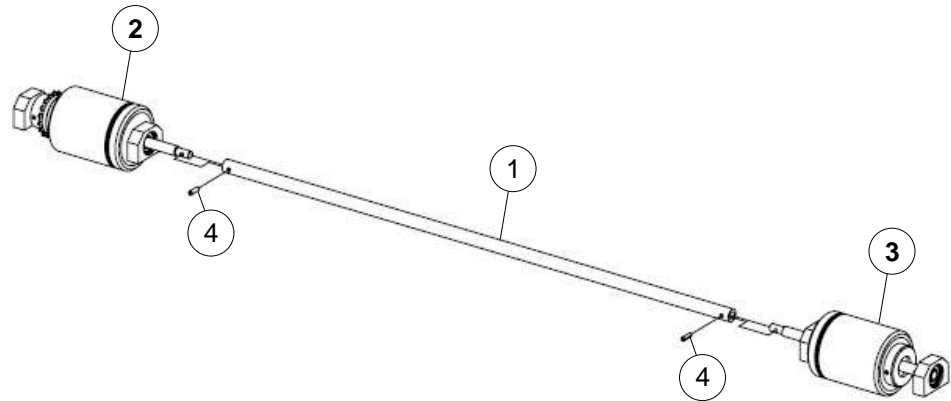
	NUMBER	DESCRIPTION
1	294-116-030	DRIVE SHAFT ASM
2	294-116-036	DRIVE CHAIN
3	294-116-044	STANDOFF, DRIVE MOTOR

	NUMBER	DESCRIPTION
4	294-116-045 294-116-039	DRIVE MOTOR ASM, 110V DRIVE MOTOR ASM, 220V
5	801-749-081	SCREW, FLANGE HEAD HEX, 1/4-20 X 1/2
6	801-749-121	SCREW, FLANGE HEAD HEX, 1/4-20 X 3/4



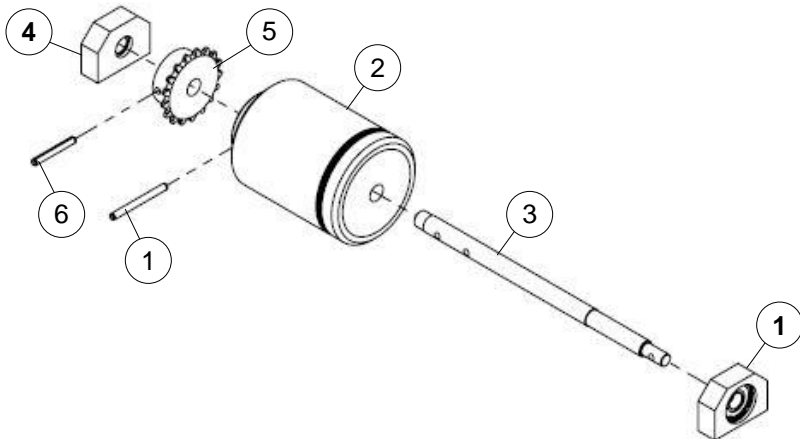
Drive Shaft Assembly - 294-116-030

	NUMBER	DESCRIPTION
1	294-116-027	DRIVE SHAFT SLEEVE
2	294-116-028	LEFT HAND DRIVE SHAFT END
3	294-116-029	RIGHT HAND DRIVE SHAFT END
4	913-437-100	PIN, ROLL, 3/16 X 5/8 LG



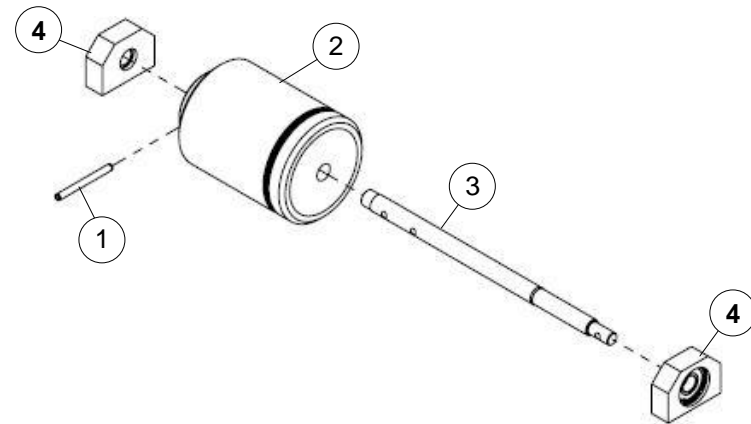
Left Hand Drive Shaft End -294-116-028

	NUMBER	DESCRIPTION
1	01-087	PIN, ROLL, 3/16 X 2 LG
2	294-115-404	DRIVE WHEEL
3	294-116-026	DRIVE SHAFT END
4	294-116-034	DRIVE SHAFT BEARING BLOCK ASM
5	294-116-035	SPROCKET, #35 CHAIN, 17T
6	913-437-240	PIN, ROLL, 3/16 X 1-1/2 LG



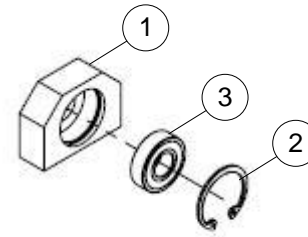
Right Hand Drive Shaft End - 294-119-029

	NUMBER	DESCRIPTION
1	01-087	PIN, ROLL, 3/16 X 2 LG
2	294-115-404	DRIVE WHEEL
3	294-116-026	DRIVE SHAFT END
4	294-116-034	DRIVE SHAFT BEARING BLOCK ASM



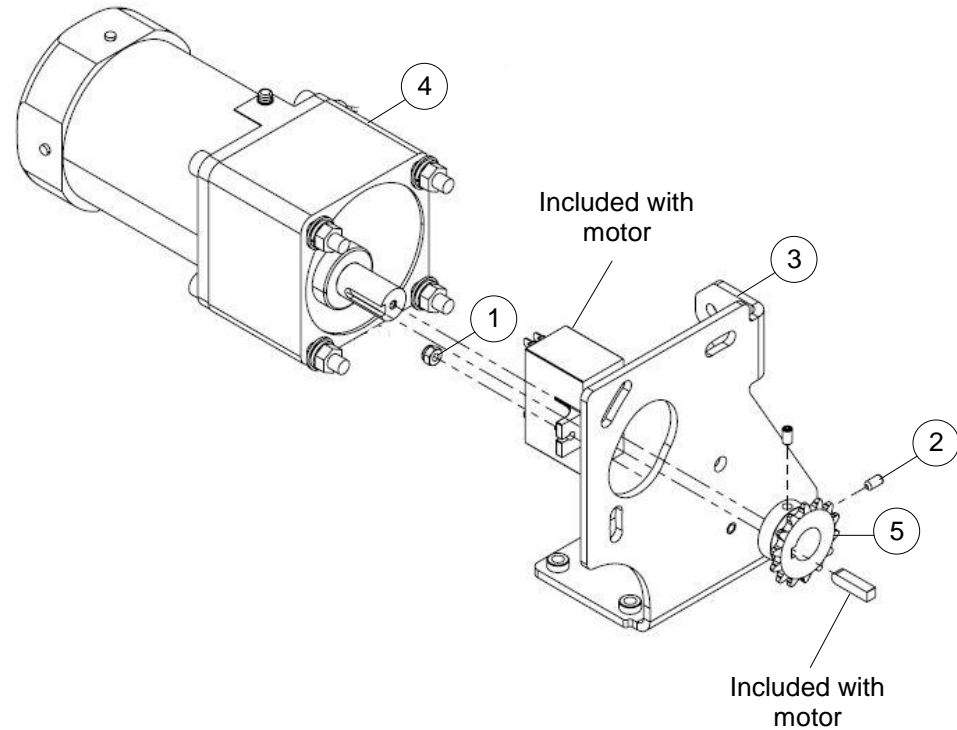
Drive Shaft Bearing Block Assembly - 294-116-034

	NUMBER	DESCRIPTION
1	294-012-131	RETAINING RING, BEARING BLOCK
2	294-116-033	BEARING BLOCK, DRIVE SHAFT
3	701-035-040	BEARING, 12 mm X 28 mm X 8 mm



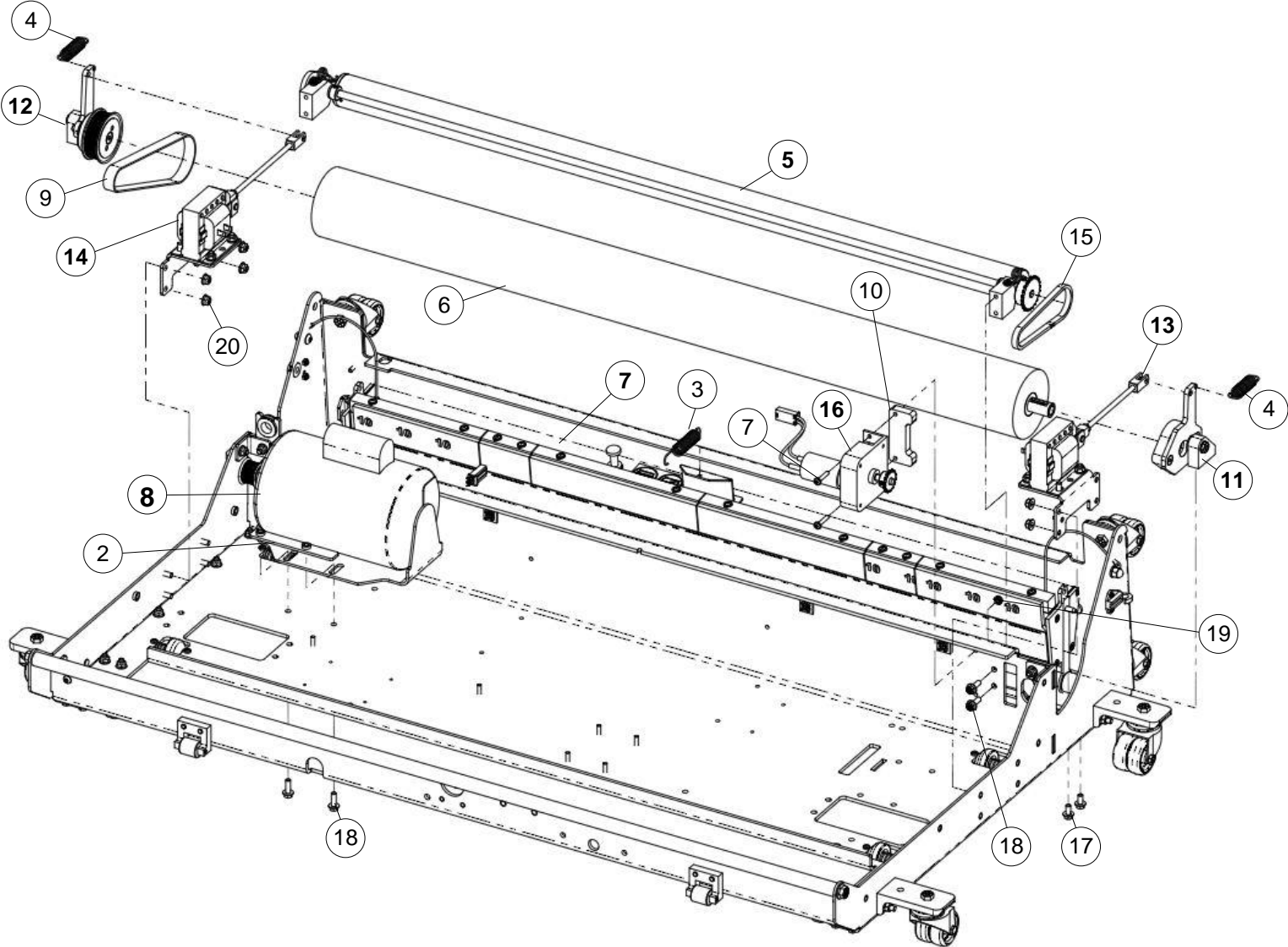
Drive Motor Assembly

	NUMBER	DESCRIPTION
1	01-014	NUT, NYLON LOCK, 8-32
2	01-098	SCREW, SET, CUP POINT 10-32
3	294-116-038	DRIVE MOTOR BRACKET ASM
4	294-116-041 294-116-040	INLINE DRIVE MOTOR, 110V INLINE DRIVE MOTOR, 220V
5	294-116-042	SPROCKET, #35, 14T



OILING and BUFFING SYSTEM

Oiling & Buffing System



Oiling & Buffing System

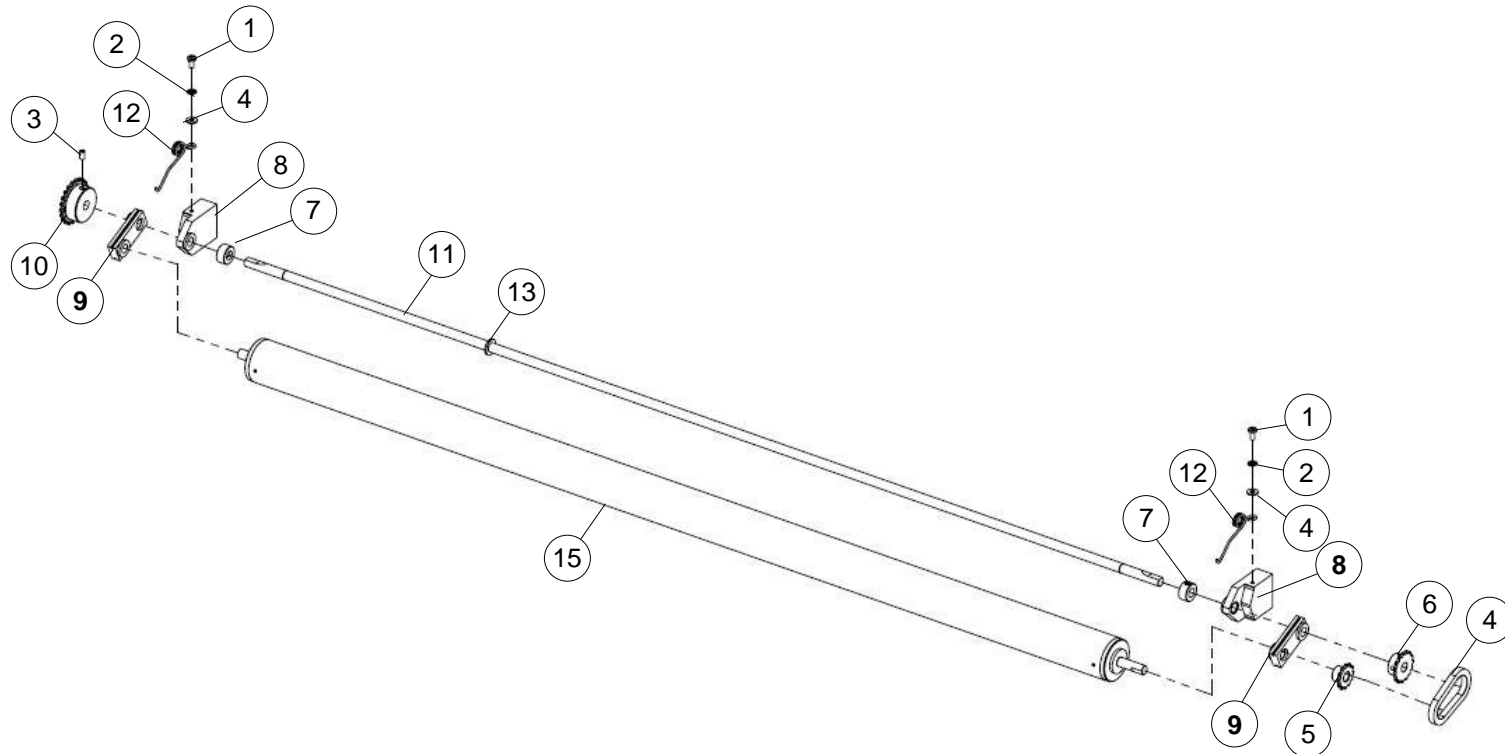
	NUMBER	DESCRIPTION
1	01-024	SCREW, PAN HEAD, 10-32 X 1
2	294-116-025	BUFFER MOTOR NUT PLATE
3	294-116-054	OIL TANK SPRING
4	294-116-055	BUFFER RETURN SPRING
5	294-116-062	TRANSFER ROLLER DRIVE ASM
6	294-116-065	BUFFER BRUSH
7	294-116-068	OIL TANK ASM
8	294-116-071 294-116-070	BUFFER MOTOR ASM, 110V BUFFER MOTOR ASM, 220V
9	294-116-082	BUFFER BELT
10	294-116-083	TRANSFER MOTOR SHIM

	NUMBER	DESCRIPTION
11	294-116-090	LEFT HAND BUFFER MOUNTING ASM
12	294-116-093	RIGHT HAND BUFFER MOUNTING ASM
13	294-116-095 294-116-094	LEFT HAND BUFFER SOLENOID ASM, 110V LEFT HAND BUFFER SOLENOID ASM, 220V
14	294-116-097 294-116-096	RIGHT HAND BUFFER SOLENOID ASM, 110V RIGHT HAND BUFFER SOLENOID ASM, 220V
15	294-116-099	TRANSFER CHAIN
16	294-116-150	TRANSFER MOTOR ASM
17	801-749-081	SCREW, FLANGE HEAD HEX, 1/4-20 X 1/2
18	801-749-121	SCREW, FLANGE HEAD HEX, 1/4-20 X 3/4
19	843-140-002	NUT, KEPS, 10-32
20	856-149-001	NUT, HEX FLANGE STOVER LOCK, 1/4-20

Transfer Roller Drive Assembly - 294-116-062

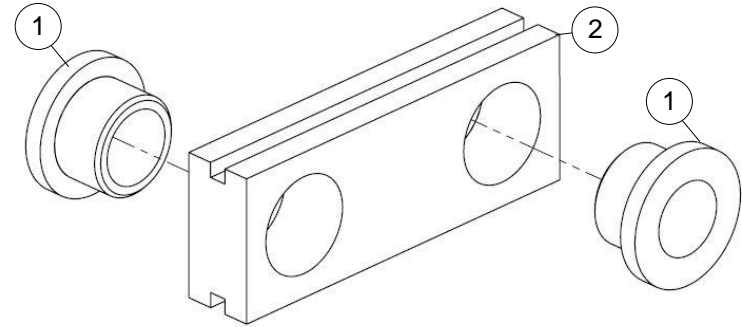
	NUMBER	DESCRIPTION
1	01-009	SCREW, PAN HEAD, 8-32 X 3/8
2	01-016	WASHER, EXT TOOTH LOCK, #8
3	01-098	SCREW, SET, CUP POINT 10-32
4	01-109	WASHER, FLAT, #8
5	03-001	SPROCKET, #25 CHAIN, 12T
6	03-007	SPROCKET, #25 CHAIN, 15T
7	04-015	SET SCREW COLLAR
8	294-116-057	ROLLER SHAFT SUPPORT ASM

	NUMBER	DESCRIPTION
9	294-116-059	TRANSFER ROLLER SUPPORT ASM
10	294-116-060	SPROCKET, #25 CHAIN, 22T
11	294-116-061	TRANSFER ROLLER DRIVE SHAFT
12	294-116-126	SPRING
13	A-0036	WASHER, TRANSFER ROLLER DRIVE
14	A-0071	CHAIN, TRANSFER ROLLER DRIVE
15	SA-0296	TRANSFER ROLLER ASM



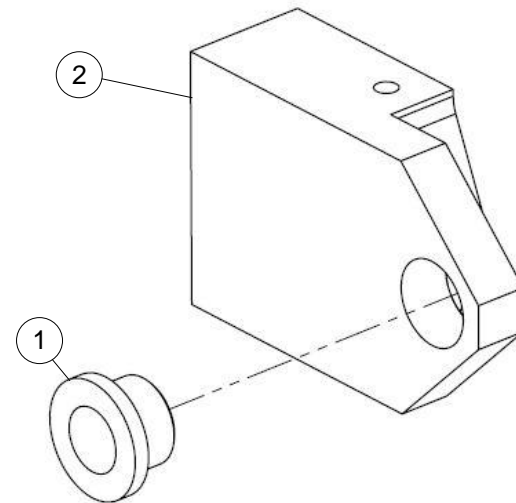
Transfer Roller Support Assembly - 294-116-059

	NUMBER	DESCRIPTION
1	04-017	BUSHING, FLANGED, 3/8 X 1/2 X 3/8
2	294-116-058	TRANSFER ROLLER SUPPORT ARM



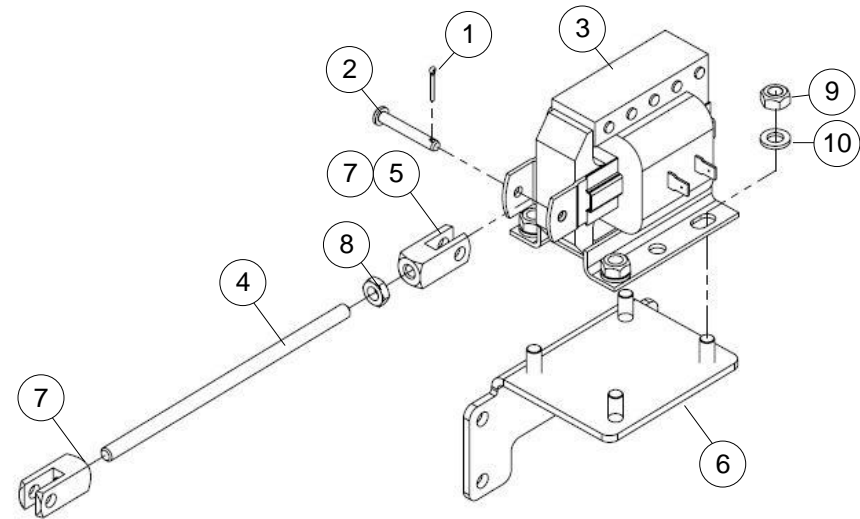
Roller Shaft Support Assembly - 294-116-057

	NUMBER	DESCRIPTION
1	04-017	BUSHING, FLANGED, 3/8 X 1/2 X 3/8
2	294-116-056	ROLLER SHAFT SUPPORT ARM



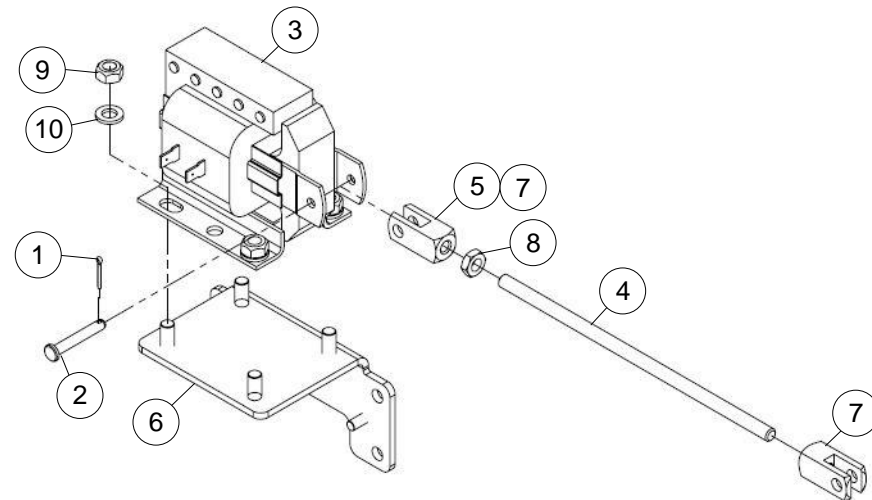
Left Hand Buffer Solenoid Assembly

	NUMBER	DESCRIPTION
1	01-080	PIN, COTTER, 1/16 X 1/2 LG
2	01-495	PIN, CLEVIS, 3/16 X 1-1/4 LG
3	294-002-032 294-002-275	SOLENOID, 110V, 60HZ, RIGHT HAND SOLENOID, 220V, 50HZ, RIGHT HAND
4	294-116-074	BUFFER ROD, LEFT HAND
5	294-116-075	BUFFER LINKAGE, LEFT HAND (INC. 4, 7, & 8)
6	294-116-078	BUFFER SOLENOID BRACKET ASM
7	706-903-000	ROD END CLEVIS
8	835-550-002	NUT, JAM, 1/4-28
9	844-049-002	NUT, STOVER LOCK, 1/4-20
10	945-548-000	WASHER, FLAT, 1/4



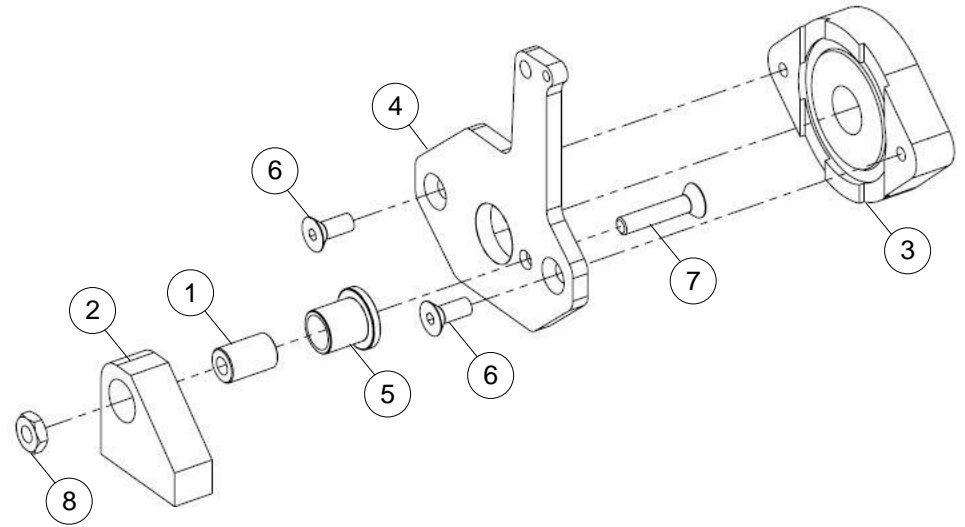
Right Hand Buffer Solenoid Assembly

	NUMBER	DESCRIPTION
1	01-080	PIN, COTTER, 1/16 X 1/2 LG
2	01-495	PIN, CLEVIS, 3/16 X 1-1/4 LG
3	294-002-033 294-002-274	SOLENOID, 110V, 60HZ, LEFT HAND SOLENOID, 220V, 50HZ, LEFT HAND
4	294-116-072	BUFFER ROD, RIGHT HAND
5	294-116-073	BUFFER LINKAGE, RIGHT HAND (INC. 4, 7, & 8)
6	294-116-078	BUFFER SOLENOID BRACKET ASM
7	706-903-000	ROD END CLEVIS
8	835-550-002	NUT, JAM, 1/4-28
9	844-049-002	NUT, STOVER LOCK, 1/4-20
10	945-548-000	WASHER, FLAT, 1/4

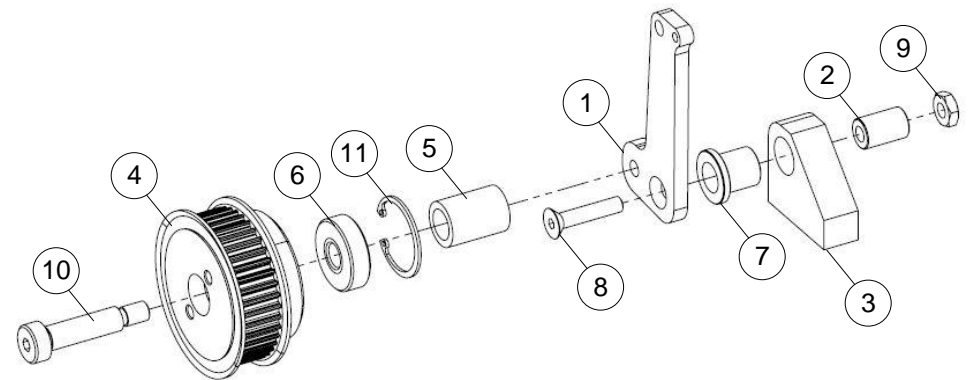


Left Hand Buffer Mounting Assembly - 294-116-090

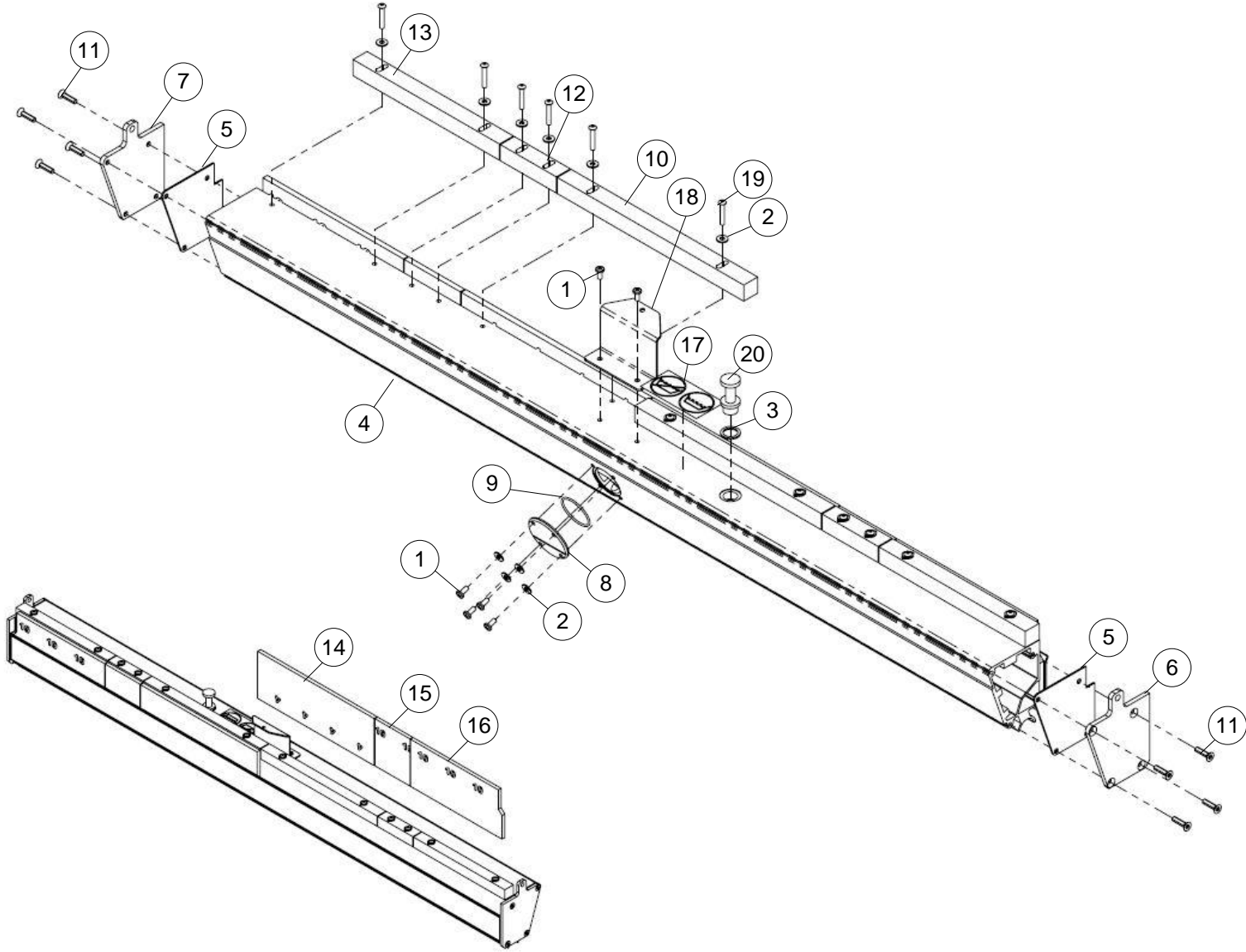
	NUMBER	DESCRIPTION
1	294-116-085	BUFFER PIVOT SHAFT
2	294-116-086	BUFFER PIVOT MOUNTING BLOCK
3	294-116-088	SWIVEL END BEARING
4	294-116-089	LEFT HAND BUFFER ARM
5	701-406-108	BUSHING, FLANGED, 1/2 X 5/8 X 3/4 X 1/8
6	808-849-100	SCREW, FLAT HEAD, 1/4-20 X 5/8
7	808-849-280	SCREW, FLAT HEAD, 1/4-20 X 1-3/4
8	836-549-008	NUT, HEAVY JAM, 1/4-20

**Right Hand Buffer Mounting Assembly - 294-116-093**

	NUMBER	DESCRIPTION
1	294-116-084	RIGHT HAND BUFFER ARM
2	294-116-085	BUFFER PIVOT SHAFT
3	294-116-086	BUFFER PIVOT MOUNTING BLOCK
4	294-116-091	BRUSH PULLEY
5	294-116-092	BUFFER PULLEY COLLAR
6	701-013-040	BEARING, 10 mm X 30 mm X 9 mm
7	701-406-108	BUSHING, FLANGED, 1/2 X 5/8 X 3/4 X 1/8
8	808-849-280	SCREW, FLAT HEAD, 1/4-20 X 1-3/4
9	836-549-008	NUT, HEAVY JAM, 1/4-20
10	880-110-350	SCREW, HEX SHOULDER, 10 mm X 35 mm
11	919-019-050	SNAP RING, INTERNAL, 1.319 X .050



Oil Tank Assembly



Oil Tank Assembly

	NUMBER	DESCRIPTION
1	01-009	SCREW, PAN HEAD, 8-32 X 3/8
2	01-109	WASHER, FLAT, #8
3	04-093	RUBBER DIPSTICK SEAL
4	294-115-508	OIL TANK
5	294-115-509	OIL TANK GASKET
6	294-115-510	OIL TANK CAP, RIGHT HAND
7	294-115-511	OIL TANK CAP, LEFT HAND
8	294-115-512	SIGHT GLASS DISK
9	294-115-513	SIGHT GLASS O-RING
10	294-115-515	ADJUSTMENT BAR, 10-INCH

	NUMBER	DESCRIPTION
11	294-115-516	SCREW, THREAD FORMING, 10-24 X 3/4
12	294-115-530	ADJUSTMENT BAR, 3-INCH
13	294-115-531	ADJUSTMENT BAR, 7-INCH
14	294-115-551	WICK, FOAM, SHO
15	294-115-553	WICK, FOAM, LO
16	294-115-665	WICK, FOAM, MLO
17	294-115-667	OVERFILL STICKER
18	294-116-067	OIL TANK PULL BRACKET
19	808-533-167	SCREW, BUTTON HEAD, 8-32 X 1
20	A-0330	OIL TANK PLUG

Replacement Wicking Foams

NUMBER	OIL OUTPUT	STENCIL #	LENGTH
294-115-654	SUPER LOW	13	48"
294-115-653	EXTRA LOW	12	48"
294-115-652	LOW	11	48"
294-115-482	MEDIUM LOW	10	48"
294-115-484	MEDIUM	8	48"
294-115-486	MEDIUM HIGH	6	48"
294-115-488	HIGH	5	48"
294-115-490	SUPER HIGH	4	48"

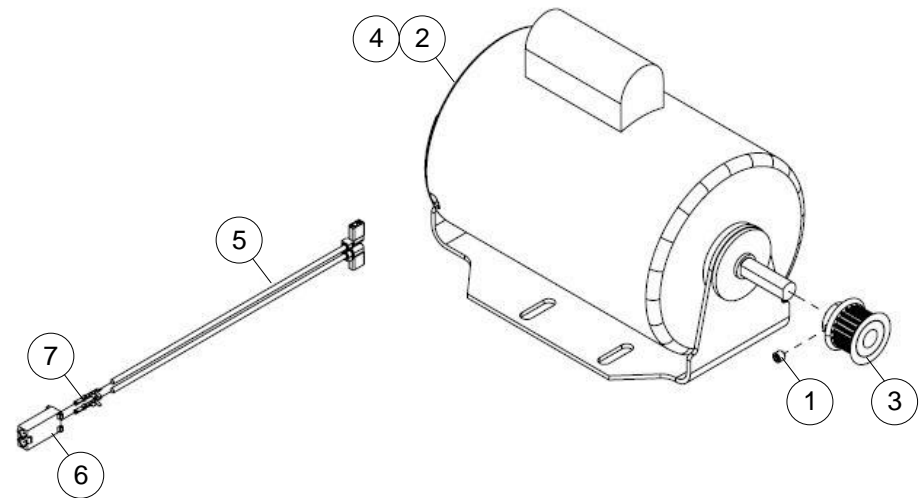
Buffer Motor Assembly

	NUMBER	DESCRIPTION
1	01-041	SCREW, SET, CUP POINT 1/4-20 X 1/4
2	294-002-268	BUFFER MOTOR
3	294-116-069	BUFFER MOTOR PULLEY
4	294-116-071 294-116-070	BUFFER MOTOR ASM, 110V (INC. 2,3,4, & 5) BUFFER MOTOR ASM, 220V (INC. 2,3,4, & 5)
5	294-116-079	BUFFER MOTOR PIGTAIL (INC. 4 & 5)
6	746-013-498	CONNECTOR, 2 POSITION
7	760-019-223	CRIMP TERMINAL, FEMALE, 14-20 AWG

The buffer motor must be wired for either 110V or 220V use. Remove motor endcap cover for wiring access. For both 110V and 220V operation, connect pigtail blue wire to L1 and pigtail black wire to L2 then follow the instructions below.

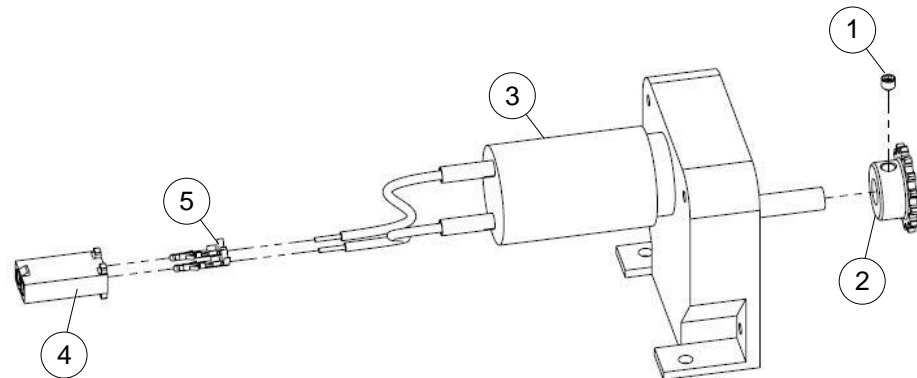
For 110V operation connect: the red wire to the #2 terminal and the black wire to the #4 terminal.

For 220V operation connect: the red wire to the #2 terminal, white wire to the #3 terminal, black wire to the #4 terminal, and blue to the #5 terminal.



Transfer Roller Motor Assembly - 294-116-150

	NUMBER	DESCRIPTION
1	01-029	SCREW, SET, CUP POINT 10-32 X 3/16
2	294-001-006	SPROCKET, #25 CHAIN, 25T
3	294-116-023	TRANSFER MOTOR ASM (INC. 4 & 5)
4	746-013-498	CONNECTOR, 2 POSITION
5	760-010-219	CRIMP TERMINAL, MALE, 14-20 AWG

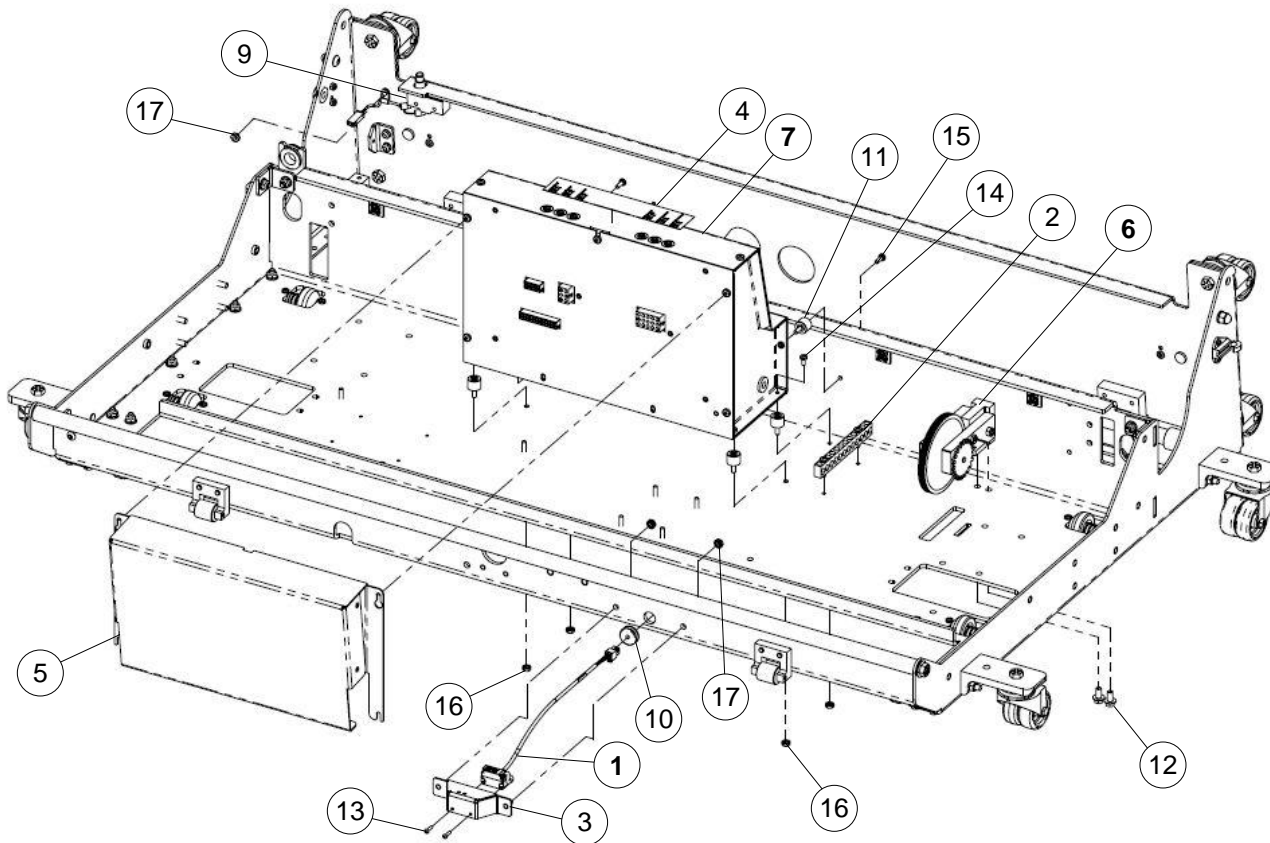


CONTROL SYSTEM

Control System Components

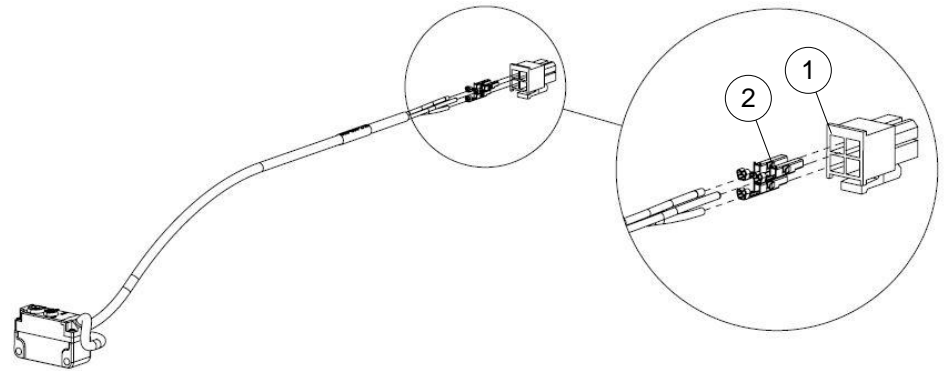
	NUMBER	DESCRIPTION
1	088-000-245	OPTICAL SENSOR ASM
2	294-115-677	GROUND BAR ASM
3	294-116-053	OPTICAL SENSOR BRACKET
4	294-116-076	CONTROL BOX FUSE DECAL
5	294-116-158	CONTROL BOX GUARD ASM
6	294-116-169	COUNTER WHEEL & ENCODER ASM
7	294-116-195 294-116-194	EXPRESS 16 CONTROL BOX ASM, 110V EXPRESS 16 CONTROL BOX ASM, 220V
8	294-116-199 294-116-198	WIRING HARNESS, 110V (NOT SHOWN) WIRING HARNESS, 220V (NOT SHOWN)
9	294-116-202	INTERLOCK SWITCH ASM

	NUMBER	DESCRIPTION
10	711-501-001	GROMMET, 3/16 X 5/8 X 3/16, RUBBER
11	721-510-029	VIBRATION MOUNT, 8-32 X 1/2, MALE-FEMALE
12	801-749-081	SCREW, FLANGE HEAD HEX, 1/4-20 X 1/2
13	808-503-121	SCREW, BUTTON HEAD, M3-.5 X 12 mm
14	818-233-062	SCREW, PAN HEAD, 8-32 X 3/8
15	818-233-082	SCREW, PAN HEAD, 8-32 X 1/2
16	843-133-002	NUT, KEPS, 8-32
17	843-140-002	NUT, KEPS, 10-32



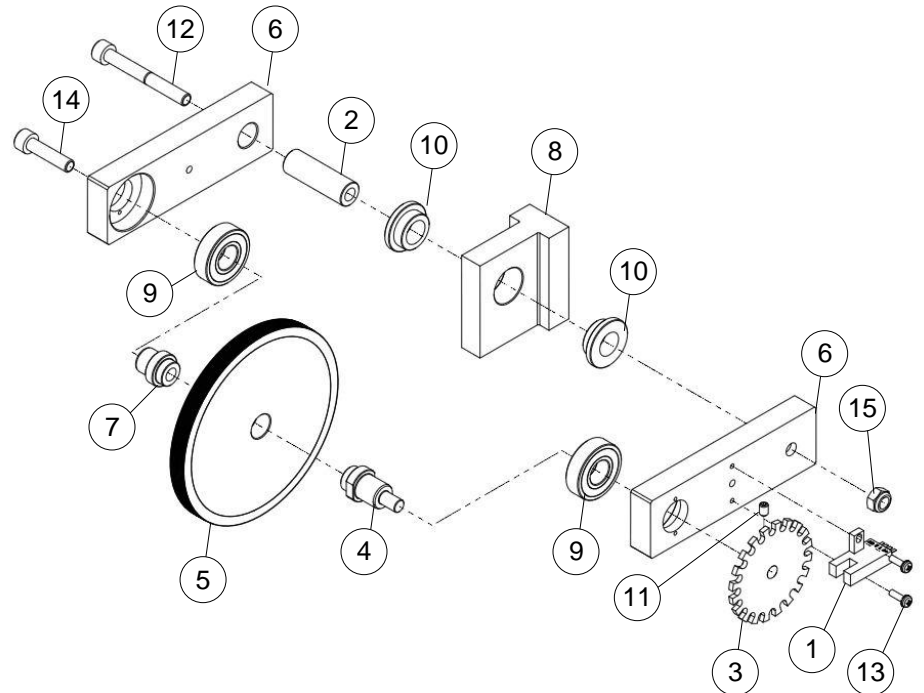
Optical Sensor Assembly - 088-000-245

	NUMBER	DESCRIPTION
1	745-020-328	CONNECTOR, 4 POSITION
2	760-010-234	CRIMP TERMINAL, 18-24 AWG

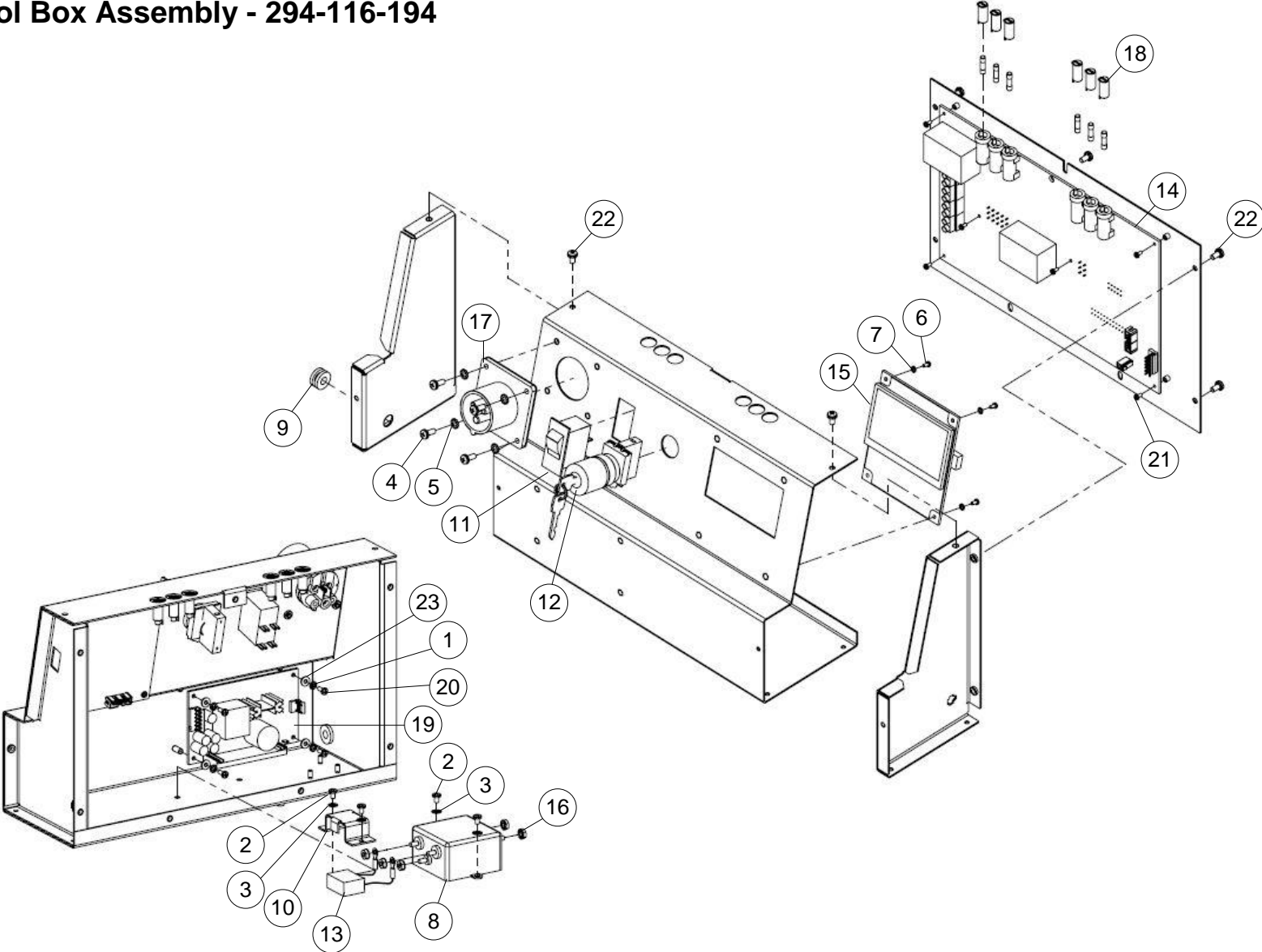


Counter Wheel Assembly

	NUMBER	DESCRIPTION
1	294-115-046	ENCODER
2	294-116-145	ENCODER SHAFT
3	294-116-162	TOOTH COUNTER WHEEL
4	294-116-163	COUNTER SHAFT, WHEEL
5	294-116-164	COUNTER WHEEL
6	294-116-165	COUNTER ARM
7	294-116-166	COUNTER SHAFT, MOUNT
8	294-116-167	COUNTER MOUNTING BRACKET
9	701-035-040	BEARING, 12 mm X 28 mm X 8 mm
10	701-415-001	BUSHING, FLANGED, 12 mm X 18 mm X 8 mm X 3 mm
11	807-104-061	SCREW, SET, CUP POINT, M4-.7 X 6 mm
12	810-206-501	SCREW, SOCKET HEAD, M6-1 X 50 mm
13	817-921-060	SCREW, PAN HEAD, 4-40 X 3/8
14	860-006-251	SCREW, SOCKET HEAD, M6-1 X 25 mm
15	872-062-017	NUT, NYLON LOCK, M6-1



110V Control Box Assembly - 294-116-195
220V Control Box Assembly - 294-116-194



	NUMBER	DESCRIPTION
1	01-005	WASHER, EXT TOOTH LOCK, #6
2	01-008	SCREW, PAN HEAD, 8-32 X 1/4
3	01-016	WASHER, EXT TOOTH LOCK, #8
4	01-021	SCREW, PAN HEAD, 10-32 X 1/2
5	01-033	WASHER, EXT TOOTH LOCK, #10
6	01-135	SCREW, PAN HEAD, 4-40 X 1/4
7	01-402	WASHER, EXT TOOTH LOCK, #4
8	02-040	RFI POWER LINE FILTER
9	04-078	GROMMET, 5/16 X 3/4 X 1/8, RUBBER
10	294-002-150	CAPACITOR BRACKET
11	743-504-010 294-002-214	CIRCUIT BREAKER, 110V 20 AMP CIRCUIT BREAKER, 220V 14 AMP
12	294-115-678	LOCKING E-STOP ASM

	NUMBER	DESCRIPTION
13	294-116-144	CAPACITOR ASM
14	294-116-181	RELAY BOARD ASM
15	294-116-183	DISPLAY BOARD ASM
16	7038-000832-000	NUT, KEPS, 8-32
17	746-023-450	POWER INLET
18	748-730-003	FUSE CAP
19	770-046-257	POWER SUPPLY, 45 WATT
20	813-227-062	SCREW, PAN HEAD, 6-32 X 3/8
21	818-221-042	SCREW, PAN HEAD, 4-40 X 1/4
22	818-240-062	SCREW, PAN HEAD, 10-32 X 3/8
23	948-631-062	WASHER, FLAT, #6

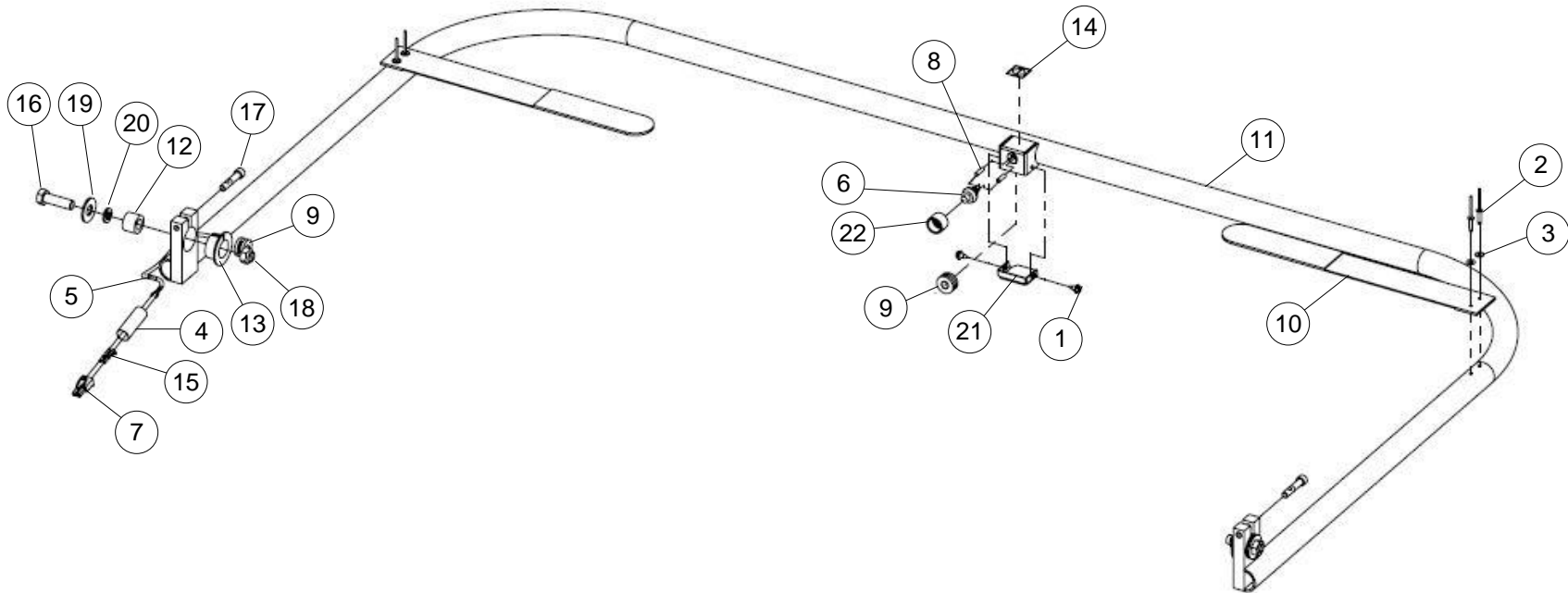
Replacement Fuses

Voltage	110 V		220V	
	Current, A	Part Number	Current, A	Part Number
Cleaner Pump	2	748-510-600	1	748-901-111
Buffer Motor	10	748-510-400	5	748-511-405
Vacuum Motor	10	748-510-400	5	748-511-405
Drive Motor	6.25	748-512-110	4	748-510-100
Buffer Solenoids	8	748-901-031	4	748-510-100
Vacuum Head Solenoid	8	748-901-031	4	748-510-100

Handle Assembly - 294-115-555

	NUMBER	DESCRIPTION
1	01-058	SCREW, HEX HEAD THREAD FORMING, #8 X 3/8
2	01-130	RIVET, 1/8 DIA X 1/2 LG, ALUMINUM
3	01-303	WASHER, FLAT, 1/8 X 7/16 X 1/32
4	02-208	HEAT SHRINK TUBING, 1/2 DIA
5	02-307	CABLE, 2 CONDUCTOR, 22 AWG, SHIELDED
6	02-335	SWITCH
7	02-336	CONNECTOR, 2 POSITION
8	02-563	HEAT SHRINK TUBING, 1/8 DIA
9	04-078	GROMMET, 5/16 X 3/4 X 1/8, RUBBER
10	04-397	HANDLE STRAP
11	294-115-030	HANDLE WELDMENT

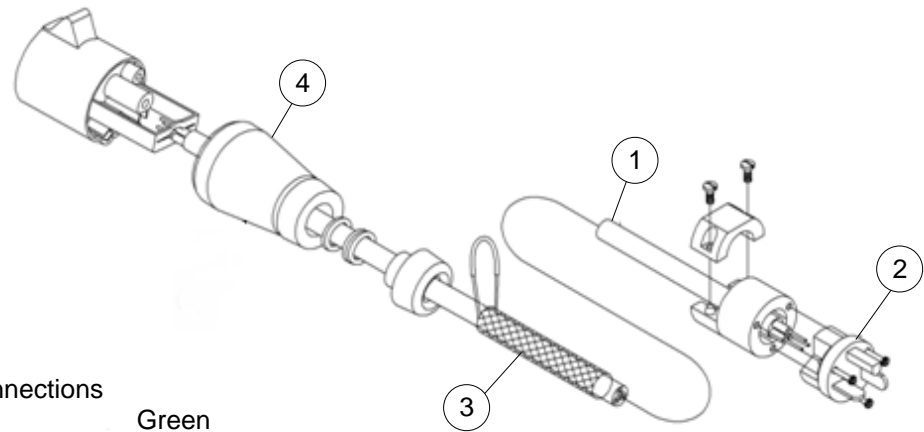
	NUMBER	DESCRIPTION
12	294-115-082	HANDLE PIVOT BOSS
13	294-115-695	FLANGED TENSION BUSHING
14	294-115-709	START STICKER
15	760-019-226	CONTACT TERMINAL, FEMALE, 18-24 AWG
16	809-865-205	SCREW, HEX, 3/8-16 X 1-1/4
17	810-349-200	SCREW, SOCKET HEAD, 1/4-20 X 1-1/4, PATCH
18	844-065-002	NUT, STOVER LOCK, 3/8-16
19	947-367-141	WASHER, FLAT, 3/8
20	951-156-002	WASHER, SPLIT LOCK, 5/16
21	A-0448	HANDLE SWITCH BOX COVER
22	A-1028	START SWITCH COVER



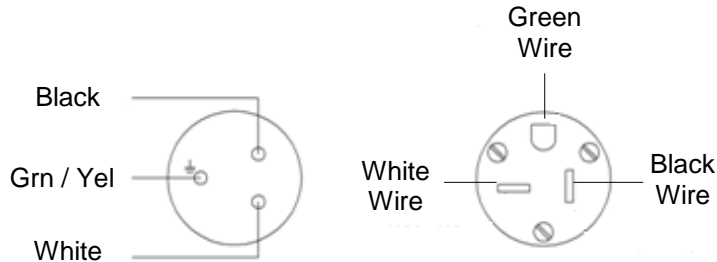
MISCELLANEOUS

294-002-359 110V Power Cord Assembly

	NUMBER	DESCRIPTION
1	02-238	WIRE, 12/3, TYPE SJTO
2	02-397	125V, 20A, MALE PLUG
3	04-443	SUPPORT GRIP, SINGLE EYE, SINGLE WEAVE
4	294-002-219	CONNECTOR BODY

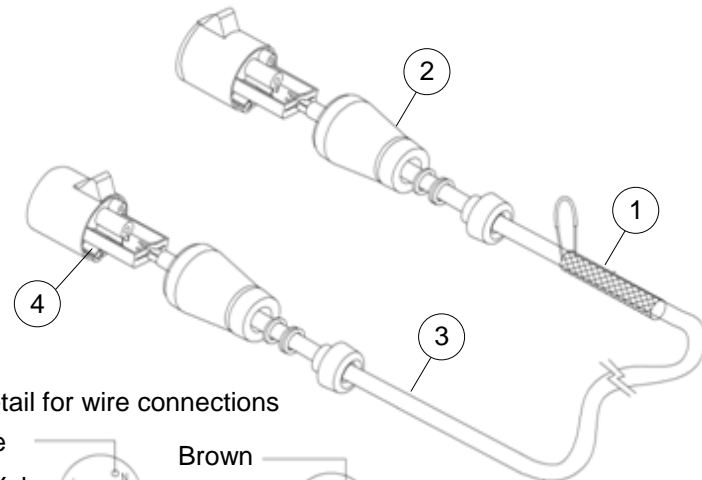


Detail for wire connections

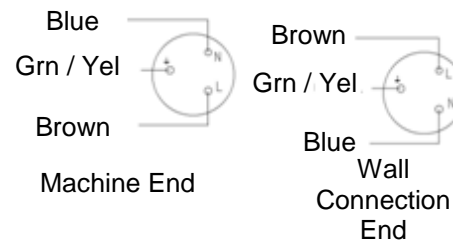


294-115-269 220V Power Cord Assembly

	NUMBER	DESCRIPTION
1	04-443	SUPPORT GRIP, SINGLE EYE, SINGLE WEAVE
2	294-002-219	CONNECTOR BODY
3	294-002-249	HAMONIZED POWER CORD
4	294-115-344	PLUG BODY

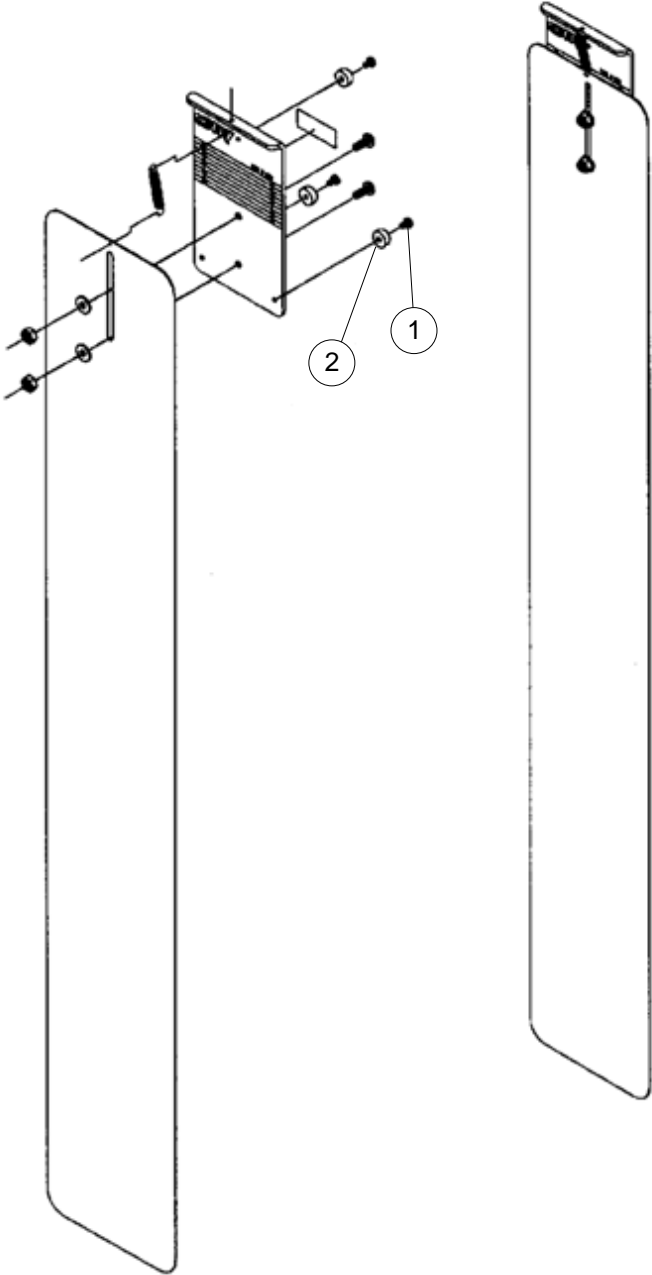


Detail for wire connections

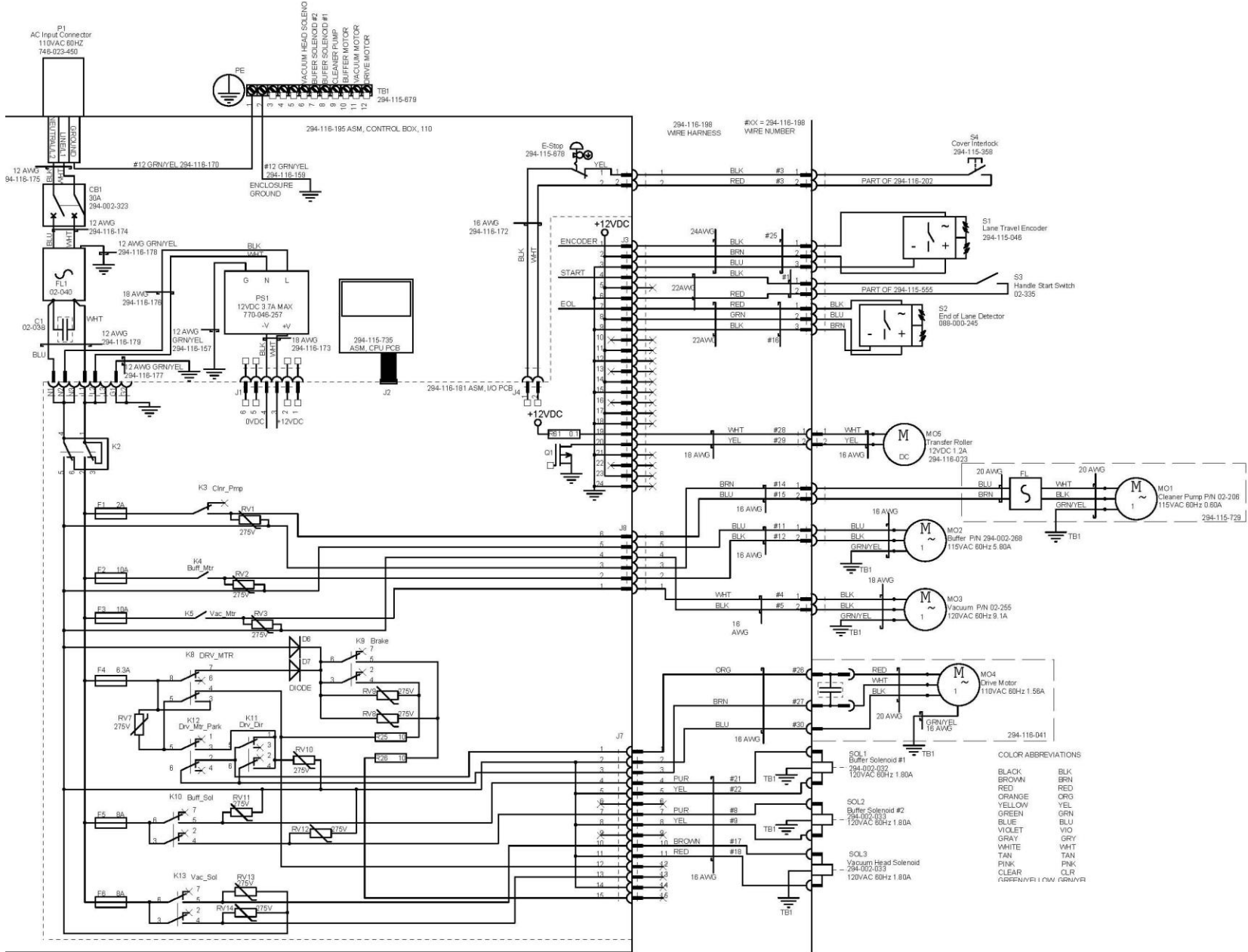


RP-43 Buffer Pressure Adjusting Tool

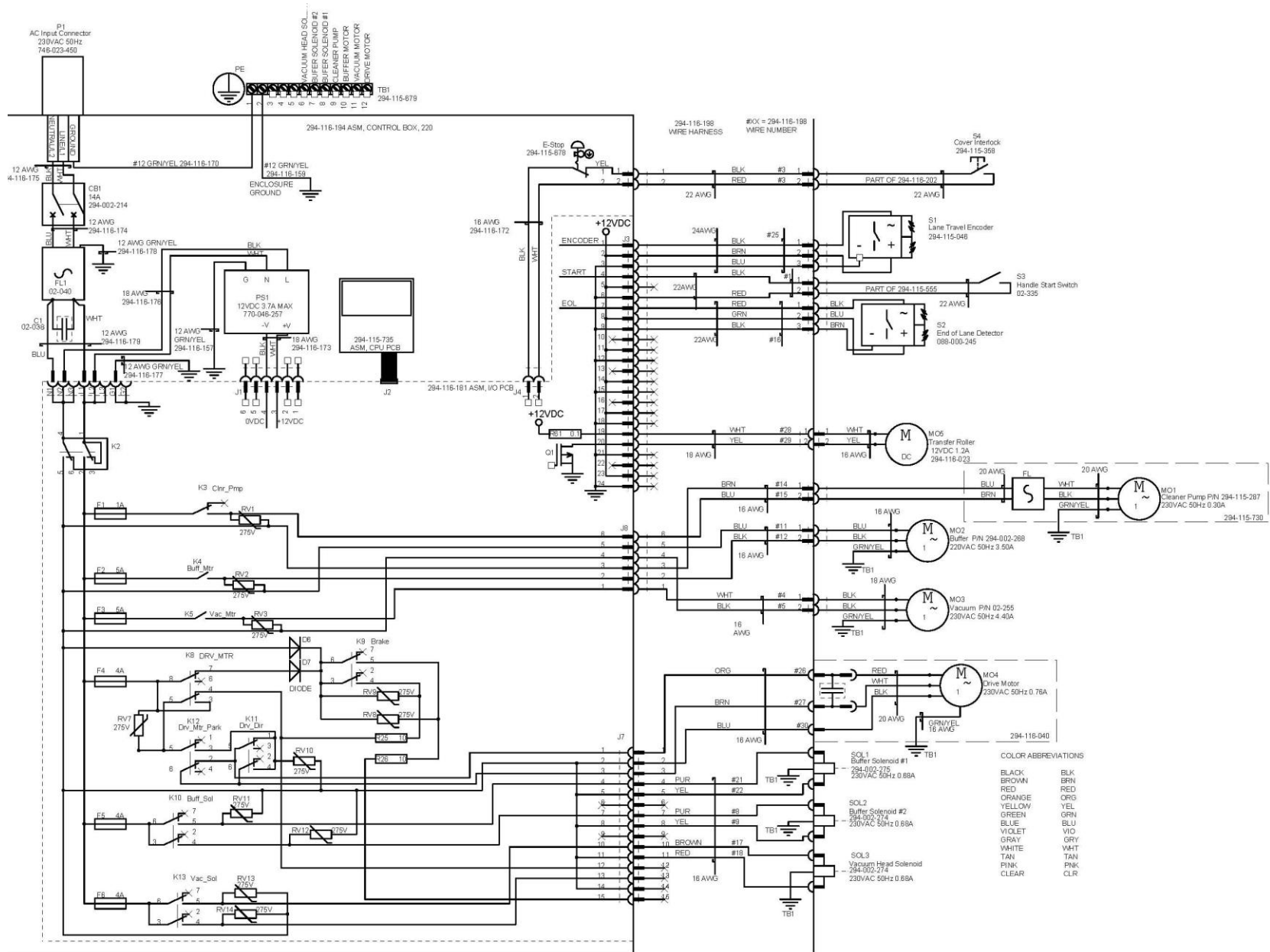
	NUMBER	DESCRIPTION
1	01-108	SCREW, PAN HEAD, 6-32 X 1/4
2	04-403	RECESSED BUMPER



Wiring Diagram 110V Lane Machine – P/N 400-294-020



Wiring Diagram 220V Lane Machine – P/N 400-294-019



This Page Intentionally Left Blank.

PART NUMBER INDEX

EZ Touch Lane Machine Operation, Maintenance, and Parts Manual

01-005	7-39	294-002-032	7-30	294-115-667	7-33
01-008	7-39	294-002-033	7-13, 7-30	294-115-673	7-17, 7-18
01-009	7-28, 7-33	294-002-150	7-39	294-115-675	7-18
01-014	7-24	294-002-214	7-39	294-115-677	7-36
01-016	7-28, 7-39	294-002-219	7-42	294-115-678	7-39
01-021	7-13, 7-39	294-002-249	7-42	294-115-695	7-40
01-024	7-27	294-002-268	7-34	294-115-709	7-40
01-029	7-34	294-002-274	7-13, 7-30	294-115-733	7-17
01-033	7-13, 7-17, 7-39	294-002-275	7-30	294-116-015	7-7
01-041	7-34	294-002-359	7-42	294-116-016	7-7
01-051	7-12	294-012-131	7-24	294-116-018	7-7
01-056	7-7	294-115-014	7-35	294-116-019	7-7
01-058	7-40	294-115-030	7-40	294-116-023	7-34
01-080	7-13, 7-30	294-115-040	7-15	294-116-025	7-27
01-087	7-23	294-115-046	7-37	294-116-026	7-23
01-089	7-15, 7-19	294-115-071	7-18	294-116-027	7-23
01-098	7-24, 7-28	294-115-072	7-17, 7-19	294-116-028	7-23
01-108	7-43	294-115-073	7-17, 7-18, 7-19	294-116-029	7-23
01-109	7-28, 7-33	294-115-074	7-18	294-116-030	7-22, 7-23
01-123	7-7	294-115-082	7-40	294-116-031	7-11
01-130	7-40	294-115-092	7-19	294-116-032	7-11
01-135	7-39	294-115-113	7-11	294-116-033	7-24
01-148	7-15	294-115-227	7-15	294-116-034	7-23, 7-24
01-161	7-7	294-115-233	7-11	294-116-035	7-23
01-229	7-17	294-115-247	7-15	294-116-036	7-22
01-303	7-15, 7-40	294-115-269	7-42	294-116-038	7-24
01-355	7-7	294-115-344	7-42	294-116-039	7-22
01-402	7-39	294-115-404	7-23	294-116-040	7-24
01-416	7-7	294-115-455	7-18	294-116-041	7-24
01-495	7-13, 7-30	294-115-482	7-33	294-116-042	7-24
02-040	7-39	294-115-484	7-33	294-116-043	7-11
02-208	7-40	294-115-486	7-33	294-116-044	7-22
02-214	7-14	294-115-488	7-33	294-116-046	7-14
02-238	7-42	294-115-490	7-33	294-116-047	7-14
02-255	7-14	294-115-506	7-13	294-116-048	7-17
02-307	7-40	294-115-508	7-33	294-116-049	7-17
02-335	7-40	294-115-509	7-33	294-116-051	7-22
02-336	7-40	294-115-510	7-33	294-116-053	7-36
02-397	7-42	294-115-511	7-33	294-116-054	7-27
02-539	7-7, 7-19	294-115-512	7-33	294-116-055	7-27
02-563	7-40	294-115-513	7-33	294-116-056	7-29
03-001	7-28	294-115-515	7-33	294-116-057	7-28
03-007	7-28	294-115-516	7-33	294-116-058	7-29
04-015	7-28	294-115-525	7-19	294-116-059	7-28
04-017	7-29	294-115-530	7-33	294-116-060	7-28
04-078	7-7, 7-39, 7-40	294-115-531	7-33	294-116-061	7-28
04-093	7-33	294-115-551	7-33	294-116-062	7-27, 7-28
04-120	7-11, 7-14	294-115-553	7-33	294-116-065	7-27
04-150	7-14	294-115-560	7-8	294-116-067	7-33
04-322	7-18	294-115-561	7-8	294-116-068	7-27
04-322-1	7-18	294-115-562	7-8	294-116-069	7-34
04-335	7-7	294-115-566	7-8	294-116-070	7-27, 7-34
04-397	7-40	294-115-613	7-7	294-116-071	7-27, 7-34
04-398	7-18	294-115-634	7-8	294-116-072	7-30
04-403	7-43	294-115-636	7-18	294-116-073	7-30
04-443	7-42	294-115-638	7-19	294-116-074	7-30
088-000-245	7-36, 7-37	294-115-652	7-33	294-116-075	7-30
		294-115-653	7-33	294-116-076	7-36
207-27, 7-33, 7-39, 7-40		294-115-654	7-33	294-116-078	7-30
294-001-006	7-34	294-115-665	7-33	294-116-079	7-34

Part Number Index

294-116-082.....	7-27	294-116-166.....	7-37	810-206-501.....	7-37
294-116-083.....	7-27	294-116-167.....	7-37	810-349-200.....	7-40
294-116-084.....	7-31	294-116-169.....	7-36	813-227-062.....	7-39
294-116-085.....	7-31	294-116-181.....	7-39	817-921-060.....	7-37
294-116-086.....	7-31	294-116-183.....	7-39	818-221-042.....	7-39
294-116-088.....	7-31	294-116-194.....	7-36, 7-38	818-233-062.....	7-36
294-116-089.....	7-31	294-116-195.....	7-36, 7-38	818-233-082.....	7-36
294-116-090.....	7-27, 7-31	294-116-198.....	7-36	818-240-062.....	7-39
294-116-091.....	7-31	294-116-199.....	7-36	832-133-008.....	7-12
294-116-092.....	7-31	294-116-202.....	7-36	835-549-002.....	7-12
294-116-093.....	7-27, 7-31			835-550-002.....	7-30
294-116-094.....	7-27	701-013-040.....	7-31	836-549-008.....	7-31
294-116-095.....	7-27	701-035-040.....	7-24, 7-37	843-133-002.....	7-36
294-116-096.....	7-27	701-406-108.....	7-31	843-140-002..	7-11, 7-12, 7-27,
294-116-097.....	7-27	701-415-001.....	7-37		7-36
294-116-098.....	7-7	702-108-000.....	7-12	844-049-002...7-11, 7-13,	7-30
294-116-099.....	7-27	7038-000832-000.....	7-39	844-065-002.....	7-40
294-116-102.....	7-17	706-903-000.....	7-30	856-149-001.....	7-27
294-116-103.....	7-17	711-501-001.....	7-36	860-006-251.....	7-37
294-116-106.....	7-19	721-521-029.....	7-36	872-062-017.....	7-37
294-116-112.....	7-19	745-020-328.....	7-37	880-110-350.....	7-31
294-116-113.....	7-17	746-013-498...7-14, 7-17,	7-34		
294-116-117.....	7-14	746-023-450.....	7-39	913-437-100.....	7-23
294-116-123.....	7-13	748-510-100.....	7-39	913-437-240.....	7-23
294-116-124.....	7-11	748-510-400.....	7-39	919-019-050.....	7-31
294-116-125.....	7-11	748-510-600.....	7-39	945-056-122.....	7-19
294-116-126.....	7-13, 7-28	748-511-405.....	7-39	945-548-000....	7-8, 7-13, 7-30
294-116-127.....	7-13	748-512-110.....	7-39	947-367-141.....	7-40
294-116-128.....	7-11, 7-13	748-730-003.....	7-39	948-545-072.....	7-13
294-116-129.....	7-12	748-901-031.....	7-39	948-631-062.....	7-39
294-116-132.....	7-12	748-901-111.....	7-39	948-753-101.....	7-12
294-116-135.....	7-12	760-010-219.....	7-34	951-148-008.....	7-15, 7-19
294-116-136.....	7-12	760-010-234.....	7-37	951-156-002.....	7-40
294-116-137.....	7-12	760-019-223...7-14, 7-17,	7-34		
294-116-139.....	7-12	760-019-226.....	7-40	A-0036.....	7-28
294-116-141.....	7-12	770-046-257.....	7-39	A-0071.....	7-28
294-116-142.....	7-12			A-0113.....	7-8
294-116-144.....	7-39	801-749-081..7-11, 7-19, 7-22,		A-0330.....	7-33
294-116-145.....	7-37		7-27, 7-36	A-0448.....	7-40
294-116-146.....	7-12	801-749-121...7-14, 7-22, 7-27		A-1028.....	7-40
294-116-147.....	7-11, 7-12	807-104-061.....	7-37	A-8307.....	7-14
294-116-148.....	7-11	808-503-121.....	7-36	A-8308.....	7-15
294-116-149.....	7-18	808-533-167.....	7-33	A-8331.....	7-15
294-116-150.....	7-27, 7-34	808-549-080.....	7-8		
294-116-151.....	7-17, 7-18	808-549-160.....	7-12	C-8341.....	7-15
294-116-152.....	7-17	808-849-100.....	7-31		
294-116-158.....	7-36	808-849-280.....	7-31	RP-43.....	7-43
294-116-162.....	7-37	809-849-085.....	7-15		
294-116-163.....	7-37	809-849-100.....	7-11, 7-13	SA-0296.....	7-28
294-116-164.....	7-37	809-849-125.....	7-19	SA-1129.....	7-11, 7-15
294-116-165.....	7-37	809-865-205.....	7-40		